

## Recombinant Mouse Ren1 Protein, His-tagged

Cat. No. Ren1-7315M Lot. No. (See product label)

### SPECIFICATION

<b>Product Overview</b>	Recombinant Mouse Ren1 protein with a His tag was expressed in insect cells.
<b>Species</b>	Mouse
<b>Source</b>	Insect Cells
<b>ProteinLength</b>	22-402
<b>Description</b>	Renin is a highly specific endopeptidase, whose only known function is to generate angiotensin I from angiotensinogen in the plasma, initiating a cascade of reactions that produce an elevation of blood pressure and increased sodium retention by the kidney.
<b>Form</b>	Liquid
<b>Molecular Mass</b>	42.5 kDa
<b>AA Sequence</b>	<p>LPTRTATFERIPLKKMPSVREILEERGVDMTRLSAEWGVFTKRPSLTNLTSPVVLNTNY  LNTQYYGEIGIGTPPQTFKVIFDTGSANLWVPSTKCSRLYLACGIHSLYESSDSSSYM  ENGSDFTIHYGSGRVKGFSLQDSVTVGGITVTQTFGEVTELPFIPFMLAKFDGVLGM  GFPAQAVGGVTPVFDHILSQGVLKEEVFSVYYNRGSHLLGGEVVLGGSDPQHYQG  NFHYVSISKTDQITMKGVSVGSSTLLCEECAVVVDTGSSFISAPTSSLKLIMQAL  GAKEKRIEYVNCVPTLPDISFDLGGGRAYTLSSDYVLQYPNRRDKLCTLALHA  MDIPPPTGPVWVLGATFIRKFYTEFDRHNNRIGFALARHHHHHH</p>

 Tel: 1-631-559-9269 1-516-512-3133

 Email: [info@creative-biomart.com](mailto:info@creative-biomart.com)  Fax: 1-631-938-8127

 45-1 Ramsey Road, Shirley, NY 11967, USA



<b>Endotoxin</b>	< 1.0 EU/μg of protein (determined by LAL method)
<b>Purity</b>	> 95 % by SDS-PAGE
<b>Stability</b>	Shelf life: one year from despatch.
<b>Storage</b>	Store undiluted at 2-8 centigrade for one week or (in aliquots) at -20 to -80 centigrade for longer. Avoid repeated freezing and thawing.
<b>Concentration</b>	0.25 mg/mL (determined by absorbance at 280nm)
<b>Storage Buffer</b>	Phosphate Buffered Saline (pH 7.4) containing 10 % glycerol.

## GENE INFORMATION

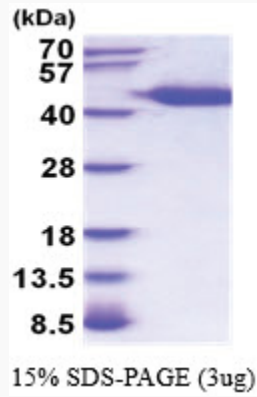
<b>Gene Name</b>	Ren1 renin 1 structural [ <i>Mus musculus</i> (house mouse) ]
<b>Official Symbol</b>	Ren1
<b>Synonyms</b>	Ren1; renin 1 structural; R; Re; Rn; Ren; Rnr; Rn-1; Ren-1; Ren-A; Ren1c; Ren1d; D19352; renin-1; angiotensinogenase; aspartyl-protease; kidney renin; renin b; EC 3.4.23.15
<b>Gene ID</b>	19701
<b>mRNA Refseq</b>	NM_031192
<b>Protein Refseq</b>	NP_112469
<b>UniProt ID</b>	P06281

Tel: 1-631-559-9269 1-516-512-3133

Email: [info@creative-biomart.com](mailto:info@creative-biomart.com) Fax: 1-631-938-8127

45-1 Ramsey Road, Shirley, NY 11967, USA

SDS-PAGE



 Tel: 1-631-559-9269 1-516-512-3133

 Email: [info@creative-biomart.com](mailto:info@creative-biomart.com)  Fax: 1-631-938-8127

 45-1 Ramsey Road, Shirley, NY 11967, USA