

Recombinant Mouse Retn Protein (Ser21-Ser114), C-His tagged

Cat. No. Retn-6791M **Lot. No.** (See product label)

SPECIFICATION

Product Overview	Recombinant mouse RETN (Ser21-Ser114) fused with the C-terminal His tag was expressed in mammalian cells.
Species	Mouse
Source	Mammalian Cells
ProteinLength	Ser21-Ser114
Description	<p>Predicted to enable hormone activity. Predicted to be involved in several processes, including positive regulation of cell communication; positive regulation of smooth muscle cell migration; and positive regulation of smooth muscle cell proliferation.</p> <p>Located in extracellular space. Is expressed in adipose tissue; gonadal fat pad; inguinal fat pad; renal fat pad; and white fat. Human ortholog (s) of this gene implicated in hypertension; hypertrophic cardiomyopathy; obesity; and type 2 diabetes mellitus. Orthologous to human RETN (resistin).</p>
Form	Lyophilized powder/frozen liquid
Molecular Mass	10.34 kDa
Purity	> 90 % as determined by SDS-PAGE
Notes	For research use only.

 Tel: 1-631-559-9269 1-516-512-3133

 Email: info@creative-biomart.com  Fax: 1-631-938-8127

 45-1 Ramsey Road, Shirley, NY 11967, USA

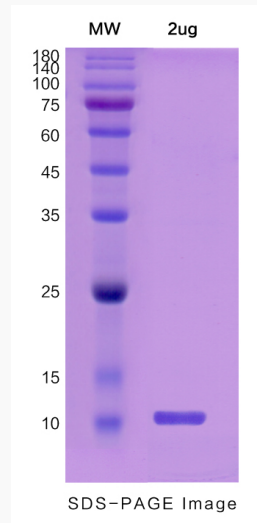
Storage	Use a manual defrost freezer and avoid repeated freeze thaw cycles. Store at 2 to 8 centigrade for one week. Store at -20 to -80 centigrade for twelve months from the date of receipt.
Storage Buffer	Supplied as solution form in PBS or lyophilized from PBS.
Reconstitution	Reconstitute in sterile water for a stock solution.
Shipping	They are shipped out with dry ice/blue ice unless customers require otherwise.
GENE INFORMATION	
Gene Name	Retn resistin [<i>Mus musculus</i> (house mouse)]
Official Symbol	Retn
Synonyms	RETN; resistin; ADSF; FIZZ3; RETN1; resistin delta2; found in inflammatory zone 3; cysteine-rich secreted protein FIZZ3; adipose tissue-specific secretory factor; cysteine-rich secreted protein A12-alpha-like 2; c/EBP-epsilon-regulated myeloid-specific secreted cysteine-rich protein; C/EBP-epsilon regulated myeloid-specific secreted cysteine-rich protein precursor 1; RSTN; XCP1; MGC126603; MGC126609;
Gene ID	57264
mRNA Refseq	NM_001204959
Protein Refseq	NP_001191888
UniProt ID	Q99P87

 Tel: 1-631-559-9269 1-516-512-3133

 Email: info@creative-biomart.com  Fax: 1-631-938-8127

 45-1 Ramsey Road, Shirley, NY 11967, USA

SDS-PAGE



 Tel: 1-631-559-9269 1-516-512-3133

 Email: info@creative-biomart.com  Fax: 1-631-938-8127

 45-1 Ramsey Road, Shirley, NY 11967, USA