

## Recombinant Rat Ripk1 protein, His-tagged

Cat. No. Ripk1-1264R    Lot. No. (See product label)

### SPECIFICATION

<b>Product Overview</b>	Recombinant Rat Ripk1 aa. (Met1~Ala179 fused with N-terminal His tag was produced in E. coli cells.
<b>Species</b>	Rat
<b>Source</b>	E.coli
<b>ProteinLength</b>	Met1~Ala179
<b>Form</b>	Freeze-dried powder
<b>Molecular Mass</b>	24kDa as determined by SDS-PAGE reducing conditions.
<b>Endotoxin</b>	<1.0EU per 1g (determined by the LAL method)
<b>Purity</b>	>96%
<b>Characteristic</b>	The isoelectric point is 6.4.
<b>Applications</b>	Positive Control; Immunogen; SDS-PAGE; WB.
<b>Stability</b>	The thermal stability is described by the loss rate. The loss rate was determined by accelerated thermal degradation test, that is, incubate the protein at 37°C for 48h, and no obvious degradation and precipitation were observed. The loss rate is less than 5% within the expiration date under appropriate storage condition.

 Tel: 1-631-559-9269    1-516-512-3133

 Email: [info@creative-biomart.com](mailto:info@creative-biomart.com)     Fax: 1-631-938-8127

 45-1 Ramsey Road, Shirley, NY 11967, USA

<b>Storage</b>	Avoid repeated freeze/thaw cycles. Store at 2-8°C for one month. Aliquot and store at -80°C for 12 months.
<b>Concentration</b>	200µg/mL
<b>Storage buffer</b>	20mM Tris, 150mM NaCl, pH8.0, containing 1mM EDTA, 1mM DTT, 0.01% sarcosyl, 5% Trehalose and Proclin300.
<b>Reconstitution</b>	Reconstitute in 20mM Tris, 150mM NaCl (pH8.0) to a concentration of 0.1-1.0mg/mL. Do not vortex.

## GENE INFORMATION

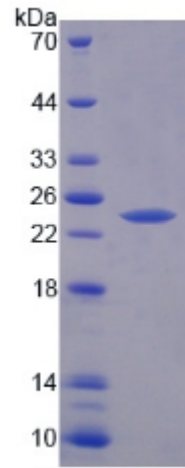
<b>Gene Name</b>	Ripk1 receptor interacting serine/threonine kinase 1 [ <i>Rattus norvegicus</i> (Norway rat) ]
<b>Official Symbol</b>	Ripk1
<b>Synonyms</b>	Ripk1; receptor interacting serine/threonine kinase 1; receptor-interacting serine/threonine-protein kinase 1; RIP; receptor (TNFRSF)-interacting serine-threonine kinase 1
<b>Gene ID</b>	306886
<b>mRNA Refseq</b>	NM_001107350.1
<b>Protein Refseq</b>	NP_001100820.1
<b>UniProt ID</b>	D3ZYL0

 Tel: 1-631-559-9269 1-516-512-3133

 Email: [info@creative-biomart.com](mailto:info@creative-biomart.com)  Fax: 1-631-938-8127

 45-1 Ramsey Road, Shirley, NY 11967, USA

SDS-PAGE



 Tel: 1-631-559-9269 1-516-512-3133

 Email: [info@creative-biomart.com](mailto:info@creative-biomart.com)  Fax: 1-631-938-8127

 45-1 Ramsey Road, Shirley, NY 11967, USA