

Recombinant Mouse Rln3 Protein, His-tagged

Cat. No. Rln3-2019M Lot. No. (See product label)

SPECIFICATION

Product Overview	Recombinant Mouse Rln3 Protein (Arg25-Cys141) with N-His tag was expressed in E. coli.
Species	Mouse
Source	E.coli
ProteinLength	Arg25-Cys141
Description	Predicted to enable G protein-coupled receptor binding activity. Predicted to be located in extracellular region. Is expressed in brain and gonad. Orthologous to human RLN3 (relaxin 3).
Form	Freeze-dried powder
Molecular Mass	Predicted Molecular Mass: 16.2 kDa Accurate Molecular Mass: 19 kDa
Purity	> 80%
Applications	Positive Control; Immunogen; SDS-PAGE; WB.
Stability	The thermal stability is described by the loss rate. The loss rate was determined by accelerated thermal degradation test, that is, incubate the protein at 37 centigrade for 48h, and no obvious degradation and precipitation were observed. The loss rate is

 Tel: 1-631-559-9269 1-516-512-3133

 Email: info@creative-biomart.com  Fax: 1-631-938-8127

 45-1 Ramsey Road, Shirley, NY 11967, USA

less than 5% within the expiration date under appropriate storage condition.

Storage

Avoid repeated freeze/thaw cycles. Store at 2-8 centigrade for one month. Aliquot and store at -80 centigrade for 12 months.

Storage Buffer

20mM Tris, 150mM NaCl, pH8.0, containing 1mM EDTA, 1mM DTT, 0.01% SKL, 5% Trehalose and Proclin300.

Reconstitution

Reconstitute in 20mM Tris, 150mM NaCl (pH8.0) to a concentration of 0.1-1.0 mg/mL. Do not vortex.

GENE INFORMATION

Gene Name

[RLN3 relaxin 3 \[Mus musculus \(house mouse\) \]](#)

Official Symbol

[RLN3](#)

Synonyms

RLN3; relaxin 3; relaxin-3; prorelaxin M3; insulin-like 7; insulin-like peptide 7; insulin-like peptide INSL7; M3; insl7;

Gene ID

[212108](#)

mRNA Refseq

[NM_173184](#)

Protein Refseq

[NP_775276](#)

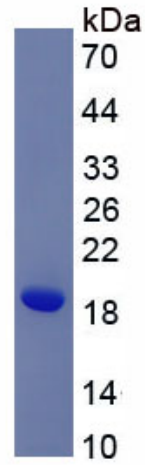
UniProt ID

[Q8CHK2](#)

 Tel: 1-631-559-9269 1-516-512-3133

 Email: info@creative-biomart.com  Fax: 1-631-938-8127

 45-1 Ramsey Road, Shirley, NY 11967, USA



 Tel: 1-631-559-9269 1-516-512-3133

 Email: info@creative-biomart.com  Fax: 1-631-938-8127

 45-1 Ramsey Road, Shirley, NY 11967, USA