

Recombinant Full Length Mouse Rnaseh2a protein, His & T7-tagged

Cat. No. Rnaseh2a-7910M Lot. No. (See product label)

SPECIFICATION

Product Overview	Recombinant Mouse Rnaseh2a aa. (Met1~Leu301 (Accession # Q9CWX8)) fused with N-terminal His & T7 tag was produced in E. coli cells.
Species	Mouse
Source	E.coli
ProteinLength	Met1~Leu301
Form	Freeze-dried powder
Molecular Mass	Predicted Molecular Mass: 37.2kDa
Endotoxin	<1.0EU per 1ug (determined by the LAL method)
Purity	>95%
Characteristic	The isoelectric point is 4.9.
Applications	SDS-PAGE; WB; ELISA; IP
Stability	The thermal stability is described by the loss rate of the target protein. The loss rate was determined by accelerated thermal degradation test, that is, incubate the protein at 37°C for 48h, and no obvious degradation and precipitation were observed.

 Tel: 1-631-559-9269 1-516-512-3133

 Email: info@creative-biomart.com  Fax: 1-631-938-8127

 45-1 Ramsey Road, Shirley, NY 11967, USA

(Referring from China Biological Products Standard, which was calculated by the Arrhenius equation.) The loss of this protein is less than 5% within the expiration date under appropriate storage condition.

Storage

Avoid repeated freeze/thaw cycles. Store at 2-8°C for one month. Aliquot and store at -80°C for 12 months.

Storage Buffer

Supplied as lyophilized form in 20mM Tris, 150mM NaCl, pH8.0, containing 1mM EDTA, 1mM DTT, 0.01% sarcosyl, 5% trehalose, and preservative.

Reconstitution

Reconstitute in sterile ddH₂O.

GENE INFORMATION

Gene Name

Rnaseh2a ribonuclease H2, large subunit [*Mus musculus* (house mouse)]

Official Symbol

Rnaseh2a

Synonyms

Rnaseh2a; ribonuclease H2, large subunit; RNHL; RNHIA; RNASEHI; 2400006P09Rik; ribonuclease H2 subunit A; RNase H2 subunit A; RNase HI large subunit; ribonuclease HI large subunit; ribonuclease HI subunit A

Gene ID

69724

mRNA Refseq

NM_027187.3

Protein Refseq

NP_081463.1

UniProt ID

Q9CWY8

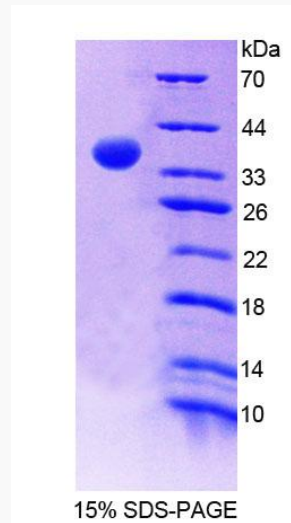
 Tel: 1-631-559-9269 1-516-512-3133

 Email: info@creative-biomart.com  Fax: 1-631-938-8127

 45-1 Ramsey Road, Shirley, NY 11967, USA



SDS-PAGE



Tel: 1-631-559-9269 1-516-512-3133

Email: info@creative-biomart.com Fax: 1-631-938-8127

45-1 Ramsey Road, Shirley, NY 11967, USA