

Recombinant Mouse Ror1(Gln30-Tyr406) protein, His-tagged

Cat. No. Ror1-194M Lot. No. (See product label)

SPECIFICATION

Product Overview	Recombinant Mouse Ror1(Gln30-Tyr406) protein(Q9Z139), fused with His tag, was expressed in HEK293.
Species	Mouse
Source	HEK293
ProteinLength	Gln30-Tyr406
Form	Lyophilized from 0.22µm filtered solution in PBS (pH 7.4). Normally 8% trehalose is added as protectant before lyophilization.
Molecular Mass	The protein has a predicted MW of 43.28 kDa. Due to glycosylation, the protein migrates to 58-68 kDa based on Tris-Bis PAGE result.
Endotoxin	Less than 1EU per µg by the LAL method.
Purity	> 95% as determined by Tris-Bis PAGE > 95% as determined by HPLC
Storage	-20 to -80°C for 12 months as supplied from date of receipt. -20 to -80°C for 3-6 months in unopened state after reconstitution. 2-8°C for 2-7 days after reconstitution. Recommend to aliquot the protein into smaller quantities for optimal storage. Please avoid freeze-thaw cycles.

 Tel: 1-631-559-9269 1-516-512-3133

 Email: info@creative-biomart.com  Fax: 1-631-938-8127

 45-1 Ramsey Road, Shirley, NY 11967, USA

Reconstitution Centrifuge tubes before opening. Reconstituting to a concentration more than 100 µg/ml is recommended. Dissolve the lyophilized protein in distilled water.

GENE INFORMATION

Gene Name [Ror1 receptor tyrosine kinase-like orphan receptor 1 \[Mus musculus \]](#)

Official Symbol [Ror1](#)

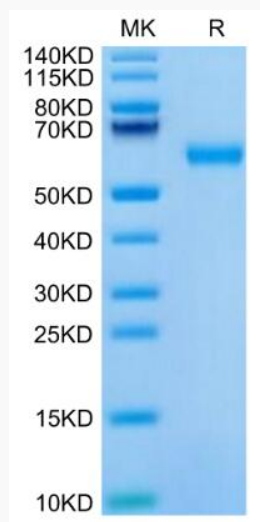
Synonyms ROR1; receptor tyrosine kinase-like orphan receptor 1; tyrosine-protein kinase transmembrane receptor ROR1; neurotrophic tyrosine kinase, receptor related 1; neurotrophic tyrosine kinase, receptor-related 1; mRor1; Ntrkr1; 2810404D04Rik;

Gene ID [26563](#)

mRNA Refseq [NM_013845](#)

Protein Refseq [NP_038873](#)

SDS-PAGE



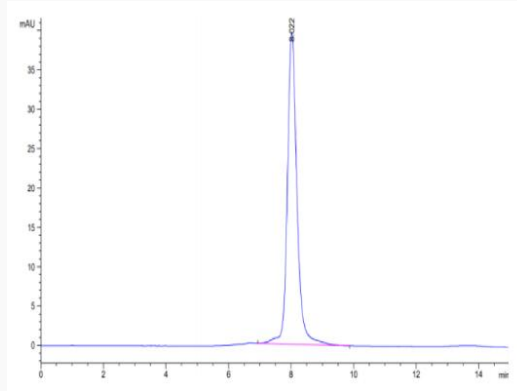
 Tel: 1-631-559-9269 1-516-512-3133

 Email: info@creative-biomart.com  Fax: 1-631-938-8127

 45-1 Ramsey Road, Shirley, NY 11967, USA



SEC-HPLC



Tel: 1-631-559-9269 1-516-512-3133

Email: info@creative-biomart.com Fax: 1-631-938-8127

45-1 Ramsey Road, Shirley, NY 11967, USA