

Recombinant Mouse Ror1 Protein, His-tagged

Cat. No. Ror1-513M Lot. No. (See product label)

SPECIFICATION

| | |
|-------------------------|---|
| Product Overview | Recombinant Mouse Ror1(Leu470~Lys707) fused with His tag at N-terminal was expressed in E. coli. |
| Species | Mouse |
| Source | E.coli |
| ProteinLength | Leu470~Lys707 |
| Description | This gene encodes a receptor tyrosine kinase that has been implicated in nervous system development, specifically in the maintenance of neural progenitor cell fate, neurite extension and synapse formation. The encoded protein, likely a pseudokinase that lacks catalytic activity, may also regulate adipogenesis. Alternative splicing results in multiple transcript variants. |
| Form | PBS, pH7.4, containing 0.01% SKL, 1mM DTT, 5% Trehalose and Proclin300. |
| Molecular Mass | 31.0kDa |
| Endotoxin | <1.0EU per 1g (determined by the LAL method) |
| Purity | > 98% |
| Applications | Positive Control; Immunogen; SDS-PAGE; WB. If bio-activity of the protein is needed, please check active protein. |

 Tel: 1-631-559-9269 1-516-512-3133

 Email: info@creative-biomart.com  Fax: 1-631-938-8127

 45-1 Ramsey Road, Shirley, NY 11967, USA

Stability The thermal stability is described by the loss rate. The loss rate was determined by accelerated thermal degradation test, that is, incubate the protein at 37 centigrade for 48h, and no obvious degradation and precipitation were observed. The loss rate is less than 5% within the expiration date under appropriate storage condition.

Storage Avoid repeated freeze/thaw cycles. Store at 2-8 centigrade for one month. Aliquot and store at -80 centigrade for 12 months.

Reconstitution Reconstitute in PBS or others.

GENE INFORMATION

Gene Name [Ror1 receptor tyrosine kinase-like orphan receptor 1 \[Mus musculus \]](#)

Official Symbol [Ror1](#)

Synonyms ROR1; receptor tyrosine kinase-like orphan receptor 1; tyrosine-protein kinase transmembrane receptor ROR1; neurotrophic tyrosine kinase, receptor related 1; neurotrophic tyrosine kinase, receptor-related 1; mRor1; Ntrkr1; 2810404D04Rik;

Gene ID [26563](#)

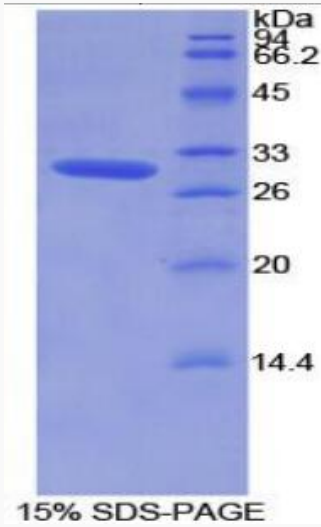
mRNA Refseq [NM_013845](#)

Protein Refseq [NP_038873](#)

 Tel: 1-631-559-9269 1-516-512-3133

 Email: info@creative-biomart.com  Fax: 1-631-938-8127

 45-1 Ramsey Road, Shirley, NY 11967, USA



Tel: 1-631-559-9269 1-516-512-3133

Email: info@creative-biomart.com Fax: 1-631-938-8127

45-1 Ramsey Road, Shirley, NY 11967, USA