

Recombinant Rat Ros1 protein, His & T7-tagged

Cat. No. Ros1-1186R **Lot. No.** (See product label)

SPECIFICATION

Product Overview	Recombinant Rat Ros1 aa. (Leu1937~Phe2210 (Accession # Q63132) fused with N-terminal His & T7 tag was produced in E. coli cells.
Species	Rat
Source	E.coli
ProteinLength	Leu1937~Phe2210
Description	A proto-oncogene and a putative receptor-type tyrosine kinase that may be active in the lung, kidney and heart.
Form	Freeze-dried powder
Molecular Mass	Predicted Molecular Mass: 34.7kDa.
Endotoxin	<1.0EU per 1g (determined by the LAL method)
Purity	>95%
Characteristic	The isoelectric point is 6.0.
Applications	SDS-PAGE; WB; ELISA; IP.
Stability	The thermal stability is described by the loss rate of the target protein. The loss rate

 Tel: 1-631-559-9269 1-516-512-3133

 Email: info@creative-biomart.com  Fax: 1-631-938-8127

 45-1 Ramsey Road, Shirley, NY 11967, USA



was determined by accelerated thermal degradation test, that is, incubate the protein at 37°C for 48h, and no obvious degradation and precipitation were observed. (Referring from China Biological Products Standard, which was calculated by the Arrhenius equation.) The loss of this protein is less than 5% within the expiration date under appropriate storage condition.

Storage	Avoid repeated freeze/thaw cycles. Store at 2-8°C for one month. Aliquot and store at -80°C for 12 months.
Storage buffer	Supplied as lyophilized form in PBS, pH7.4, containing 5% trehalose, 0.01% sarcosyl.
Reconstitution	Reconstitute in sterile PBS, pH7.2-pH7.4.

GENE INFORMATION

Gene Name	Ros1 ROS proto-oncogene 1 , receptor tyrosine kinase [Rattus norvegicus (Norway rat)]
Official Symbol	Ros1
Synonyms	Ros1; ROS proto-oncogene 1 , receptor tyrosine kinase; ROS1C; proto-oncogene tyrosine-protein kinase ROS; Ros1 proto-oncogene; c-Ros receptor tyrosine kinase; c-ros oncogene 1 , receptor tyrosine kinase; c-ros-1; heart - derived c - ros - 1 proto - oncogene; proto-oncogene c-Ros; proto-oncogene c-Ros-1; receptor tyrosine kinase c-ros oncogene 1; v-ros UR2 sarcoma virus oncogene homolog 1
Gene ID	25346
mRNA Refseq	NM_012874.1
Protein Refseq	NP_037006.1

Tel: 1-631-559-9269 1-516-512-3133

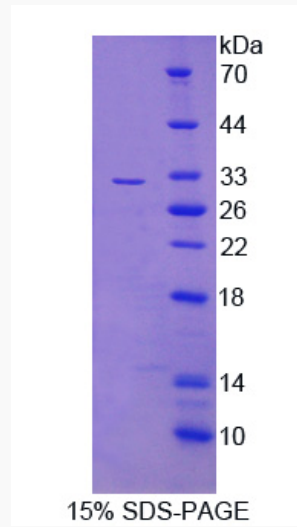
Email: info@creative-biomart.com Fax: 1-631-938-8127

45-1 Ramsey Road, Shirley, NY 11967, USA

UniProt ID

Q63132

SDS-PAGE



 Tel: 1-631-559-9269 1-516-512-3133

 Email: info@creative-biomart.com  Fax: 1-631-938-8127

 45-1 Ramsey Road, Shirley, NY 11967, USA