

Recombinant Rat Rpp40 Protein, His-tagged

Cat. No. Rpp40-2034R **Lot. No.** (See product label)

SPECIFICATION

Product Overview	Recombinant Rat Rpp40 Protein (Met91-Asp259) with N-His tag was expressed in E. coli.
Species	Rat
Source	E.coli
ProteinLength	Met91-Asp259
Description	Predicted to enable ribonuclease P RNA binding activity. Predicted to contribute to ribonuclease MRP activity and ribonuclease P activity. Predicted to be involved in endonucleolytic cleavage in ITS1 to separate SSU-rRNA from 5.8S rRNA and LSU-rRNA from tricistronic rRNA transcript (SSU-rRNA, 5.8S rRNA, LSU-rRNA); endonucleolytic cleavage involved in tRNA processing; and tRNA 5'-leader removal. Predicted to be located in nucleolus. Predicted to be part of multimeric ribonuclease P complex and ribonuclease MRP complex. Orthologous to human RPP40 (ribonuclease P/MRP subunit p40).
Form	Freeze-dried powder
Molecular Mass	Predicted Molecular Mass: 23.0 kDa Accurate Molecular Mass: 23 kDa
Purity	> 97%

 Tel: 1-631-559-9269 1-516-512-3133

 Email: info@creative-biomart.com  Fax: 1-631-938-8127

 45-1 Ramsey Road, Shirley, NY 11967, USA

Applications	Cell culture; Activity Assays.
Stability	The thermal stability is described by the loss rate. The loss rate was determined by accelerated thermal degradation test, that is, incubate the protein at 37 centigrade for 48h, and no obvious degradation and precipitation were observed. The loss rate is less than 5% within the expiration date under appropriate storage condition.
Storage	Avoid repeated freeze/thaw cycles. Store at 2-8 centigrade for one month. Aliquot and store at -80 centigrade for 12 months.
Storage Buffer	20mM Tris, 150mM NaCl, pH8.0, containing 1mM EDTA, 1mM DTT, 0.01% SKL, 5% Trehalose and Proclin300.
Reconstitution	Reconstitute in 20mM Tris, 150mM NaCl (pH8.0) to a concentration of 0.1-1.0 mg/mL. Do not vortex.

GENE INFORMATION

Gene Name	Rpp40 ribonuclease P/MRP subunit p40 [<i>Rattus norvegicus</i> (Norway rat)]
Official Symbol	Rpp40
Synonyms	Rpp40; ribonuclease P/MRP subunit p40; ribonuclease P protein subunit p40; RNaseP protein p40; ribonuclease P 40 subunit; ribonuclease P/MRP 40 subunit; EC 3.1.26.5
Gene ID	291071
mRNA Refseq	NM_001013055
Protein Refseq	NP_001013073

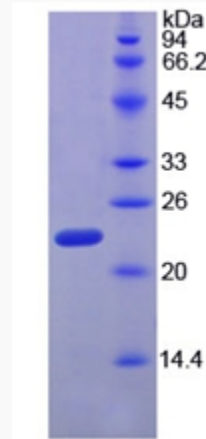
 Tel: 1-631-559-9269 1-516-512-3133

 Email: info@creative-biomart.com  Fax: 1-631-938-8127

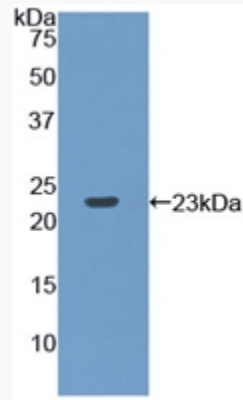
 45-1 Ramsey Road, Shirley, NY 11967, USA


UniProt ID

Q5BK64




WB

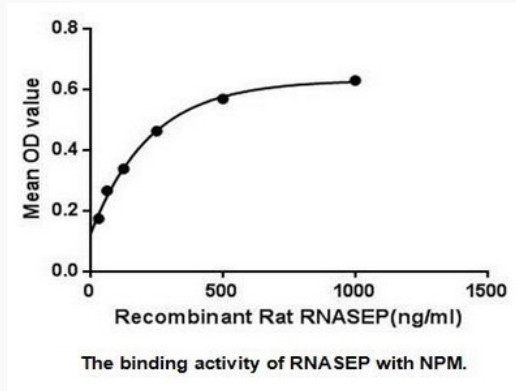


 Tel: 1-631-559-9269 1-516-512-3133


 Email: info@creative-biomart.com  Fax: 1-631-938-8127

 45-1 Ramsey Road, Shirley, NY 11967, USA

Bioactivity



The binding activity of RNASEP with NPM.

 Tel: 1-631-559-9269 1-516-512-3133

 Email: info@creative-biomart.com  Fax: 1-631-938-8127

 45-1 Ramsey Road, Shirley, NY 11967, USA