

Recombinant Mouse Rspo1 protein, His-tagged

Cat. No. Rspo1-1943M Lot. No. (See product label)

SPECIFICATION

Product Overview	Recombinant Mouse Rspo1 aa. (Ser21~Ala135 (Accession # Q9Z132)) fused with N-terminal His tag was produced in E. coli cells.
Species	Mouse
Source	E.coli
ProteinLength	Ser21~Ala135
Form	Freeze-dried powder
Molecular Mass	Predicted Molecular Mass: 14.2kDa
Endotoxin	<1.0EU per 1ug (determined by the LAL method)
Purity	>95%
Applications	SDS-PAGE; WB; ELISA; IP.
Stability	The thermal stability is described by the loss rate. The loss rate was determined by accelerated thermal degradation test, that is, incubate the protein at 37°C for 48h, and no obvious degradation and precipitation were observed. The loss rate is less than 5% within the expiration date under appropriate storage condition.
Storage	Avoid repeated freeze/thaw cycles. Store at 2-8°C for one month. Aliquot and store at

 Tel: 1-631-559-9269 1-516-512-3133

 Email: info@creative-biomart.com  Fax: 1-631-938-8127

 45-1 Ramsey Road, Shirley, NY 11967, USA

-80°C for 12 months.

Storage buffer Supplied as lyophilized form in PBS, pH7.4, containing 5% sucrose, 0.01% sarcosyl.

Reconstitution Reconstitute in sterile PBS, pH7.2-pH7.4.

Isoelectric Point 8.6

GENE INFORMATION

Gene Name [Rspo1 R-spondin 1 \[Mus musculus \(house mouse\) \]](#)

Official Symbol [Rspo1](#)

Synonyms Rspo1; R-spondin 1; Rspodin; R-spondin; R-spondin-1; R-spondin homolog; cristin-3; cysteine-rich and single thrombospondin domain-containing protein 3; mCristin-3; roof plate-specific spondin-1; thrombospondin type 1 domain containing gene Rspodin

Gene ID [192199](#)

mRNA Refseq [NM_138683.2](#)

Protein Refseq [NP_619624.2](#)

UniProt ID [Q9Z132](#)

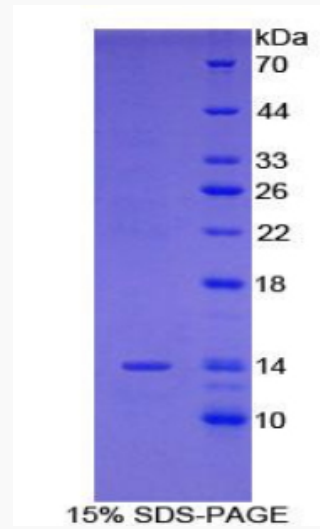
 Tel: 1-631-559-9269 1-516-512-3133

 Email: info@creative-biomart.com  Fax: 1-631-938-8127

 45-1 Ramsey Road, Shirley, NY 11967, USA



SDS-PAGE



Tel: 1-631-559-9269 1-516-512-3133

Email: info@creative-biomart.com Fax: 1-631-938-8127

45-1 Ramsey Road, Shirley, NY 11967, USA