

## Recombinant Mouse Ryr1 Protein, His&GST-tagged

**Cat. No.** Ryr1-2669M    **Lot. No.** (See product label)

### SPECIFICATION

<b>Product Overview</b>	Recombinant Mouse Ryr1 Protein (His99-Cys394) with a N-His&GST tag was expressed in E. coli.
<b>Species</b>	Mouse
<b>Source</b>	E.coli
<b>ProteinLength</b>	His99-Cys394
<b>Description</b>	Enables protease binding activity; ryanodine-sensitive calcium-release channel activity; and voltage-gated calcium channel activity. Involved in animal organ development; cellular response to caffeine; and release of sequestered calcium ion into cytosol by sarcoplasmic reticulum. Acts upstream of or within muscle contraction and release of sequestered calcium ion into cytosol. Located in T-tubule; sarcoplasmic reticulum membrane; and smooth endoplasmic reticulum. Part of junctional membrane complex. Is expressed in several structures, including brain; embryo mesenchyme; endocrine gland; heart; and skeletal musculature. Used to study central core disease and malignant hyperthermia. Human ortholog(s) of this gene implicated in central core disease; malignant hyperthermia; and multiminicore disease. Orthologous to human RYR1 (ryanodine receptor 1).
<b>Form</b>	Freeze-dried powder
<b>Molecular Mass</b>	Predicted Molecular Mass: 63.2 kDa Accurate Molecular Mass: 63 kDa

 Tel: 1-631-559-9269    1-516-512-3133

 Email: [info@creative-biomart.com](mailto:info@creative-biomart.com)     Fax: 1-631-938-8127

 45-1 Ramsey Road, Shirley, NY 11967, USA

<b>Endotoxin</b>	<1.0 EU per 1g (determined by the LAL method).
<b>Purity</b>	> 95%
<b>Applications</b>	Positive Control; Immunogen; SDS-PAGE; WB.
<b>Stability</b>	The thermal stability is described by the loss rate. The loss rate was determined by accelerated thermal degradation test, that is, incubate the protein at 37 centigrade for 48h, and no obvious degradation and precipitation were observed. The loss rate is less than 5% within the expiration date under appropriate storage condition.
<b>Storage</b>	Avoid repeated freeze/thaw cycles. Store at 2-8 centigrade for one month. Aliquot and store at -80 centigrade for 12 months.
<b>Storage Buffer</b>	20mM Tris, 150mM NaCl, pH8.0, containing 1mM EDTA, 1mM DTT, 0.01% SKL, 5% Trehalose and Proclin300.
<b>Reconstitution</b>	Reconstitute in 20mM Tris, 150mM NaCl (pH8.0) to a concentration of 0.1-1.0 mg/mL. Do not vortex.

## GENE INFORMATION

<b>Gene Name</b>	Ryr1 ryanodine receptor 1, skeletal muscle [ <i>Mus musculus</i> (house mouse) ]
<b>Official Symbol</b>	Ryr1
<b>Synonyms</b>	Ryr1; ryanodine receptor 1, skeletal muscle; Ryr; skrr; RYR-1; AI528790; ryanodine receptor 1 calcium release channel skeletal muscle calcium release channel skeletal muscle ryanodine receptor

 Tel: 1-631-559-9269 1-516-512-3133

 Email: [info@creative-biomart.com](mailto:info@creative-biomart.com)  Fax: 1-631-938-8127

 45-1 Ramsey Road, Shirley, NY 11967, USA

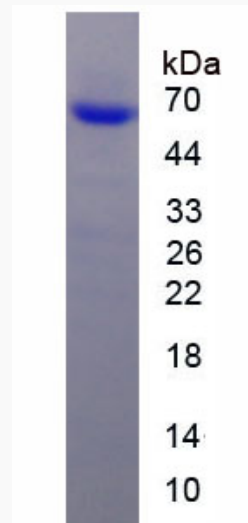
skeletal muscle-type ryanodine receptor  
type 1 ryanodine receptor

**Gene ID** 20190

**mRNA Refseq** NM\_009109

**Protein Refseq** NP\_033135

**UniProt ID** E9PZQ0



 Tel: 1-631-559-9269 1-516-512-3133

 Email: [info@creative-biomart.com](mailto:info@creative-biomart.com)  Fax: 1-631-938-8127

 45-1 Ramsey Road, Shirley, NY 11967, USA