

## Recombinant SARS-CoV-2 S Protein, Fc/Avi-tagged

Cat. No. S-001S Lot. No. (See product label)

### SPECIFICATION

<b>Product Overview</b>	Severe acute respiratory Coronavirus 2 Spike Glycoprotein S1 (SARS-CoV-2 Spike S1), a.a. 13-665, fused at the C-terminus of the Fc portion of human IgG1, with a C-terminal Avi-tag, expressed in a HEK293 expression system and enzymatically biotinylated using Avi-tag™ technology. Biotinylation is confirmed to be $\geq 90\%$ .
<b>Species</b>	SARS-CoV-2
<b>Source</b>	HEK293
<b>ProteinLength</b>	13-665
<b>Description</b>	Attaches the virion to the cell membrane by interacting with host receptor, initiating the infection. Binding to human ACE2 and CLEC4M/DC-SIGNR receptors and internalization of the virus into the endosomes of the host cell induces conformational changes in the S glycoprotein. Proteolysis by cathepsin CTSL may unmask the fusion peptide of S2 and activate membranes fusion within endosomes.
<b>Molecular Mass</b>	102 kDa
<b>Purity</b>	$\geq 90\%$
<b>Applications</b>	Enzyme kinetics, screening inhibitors, and selectivity profiling
<b>Stability</b>	$\geq 6$ months

 Tel: 1-631-559-9269 1-516-512-3133

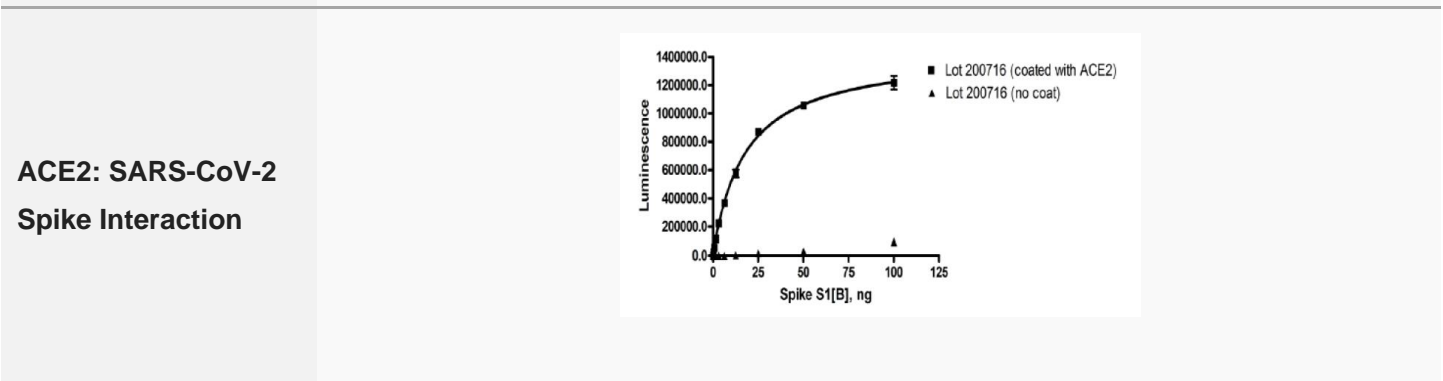
 Email: [info@creative-biomart.com](mailto:info@creative-biomart.com)  Fax: 1-631-938-8127

 45-1 Ramsey Road, Shirley, NY 11967, USA

<b>Storage</b>	Store at -80 centigrade
<b>Storage Buffer</b>	8 mM Phosphate, pH 7.4, 110 mM NaCl, 2.2 mM KCl, and 20% glycerol
<b>Warning</b>	Avoid freeze/thaw cycles

## GENE INFORMATION

<b>Gene Name</b>	S spike glycoprotein [ SARS coronavirus Tor2 ]
<b>Official Symbol</b>	S
<b>Synonyms</b>	S; spike glycoprotein; E2; spike glycoprotein
<b>Gene ID</b>	1489668
<b>UniProt ID</b>	P59594

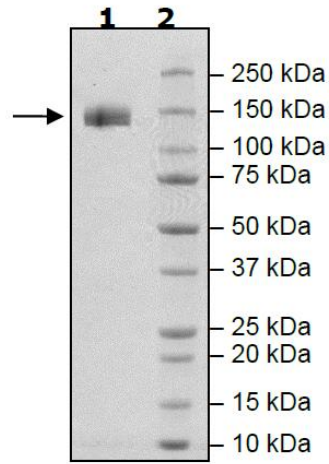


Tel: 1-631-559-9269 1-516-512-3133

Email: [info@creative-biomart.com](mailto:info@creative-biomart.com) Fax: 1-631-938-8127

45-1 Ramsey Road, Shirley, NY 11967, USA

**SDS-PAGE of  
Coomassie staining**



Lane 1: 4 g SARS-CoV-2; Lane 1: Protein Marker

 Tel: 1-631-559-9269 1-516-512-3133

 Email: [info@creative-biomart.com](mailto:info@creative-biomart.com)  Fax: 1-631-938-8127

 45-1 Ramsey Road, Shirley, NY 11967, USA