

Recombinant SARS-CoV-2 S Protein, Fc/Avi-tagged

Cat. No. S-002S Lot. No. (See product label)

SPECIFICATION

Product Overview	Severe acute respiratory Coronavirus 2 Spike Glycoprotein S1 (SARS-CoV-2 Spike S1), a.a. 16-685, fused at the C-terminus of the Fc portion of human IgG1, with a C-terminal Avi-tag™, expressed in a HEK293 expression system.
Species	SARS-CoV-2
Source	HEK293
ProteinLength	16-685
Description	Attaches the virion to the cell membrane by interacting with host receptor, initiating the infection. Binding to human ACE2 and CLEC4M/DC-SIGNR receptors and internalization of the virus into the endosomes of the host cell induces conformational changes in the S glycoprotein. Proteolysis by cathepsin CTSL may unmask the fusion peptide of S2 and activate membranes fusion within endosomes.
Molecular Mass	104 kDa
Purity	≥ 90%
Applications	Enzyme kinetics, screening inhibitors, and selectivity profiling
Stability	≥ 6 months
Storage	Store at -80 centigrade

 Tel: 1-631-559-9269 1-516-512-3133

 Email: info@creative-biomart.com  Fax: 1-631-938-8127

 45-1 Ramsey Road, Shirley, NY 11967, USA

Storage Buffer 8 mM Phosphate, pH 7.4, 110 mM NaCl, 2.2 mM KCl, and 20% glycerol

Warning Avoid freeze/thaw cycles

GENE INFORMATION

Gene Name S spike glycoprotein [SARS coronavirus Tor2]

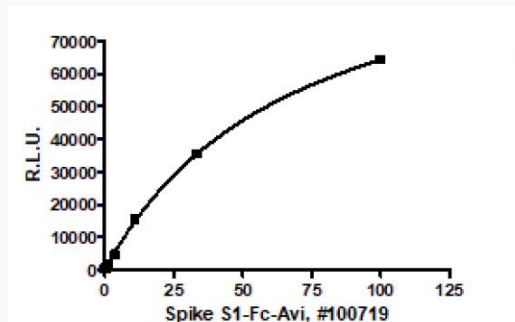
Official Symbol S

Synonyms S; spike glycoprotein; E2; spike glycoprotein

Gene ID 1489668

UniProt ID P59594

**ACE2: SARS-CoV-2
Inhibition**

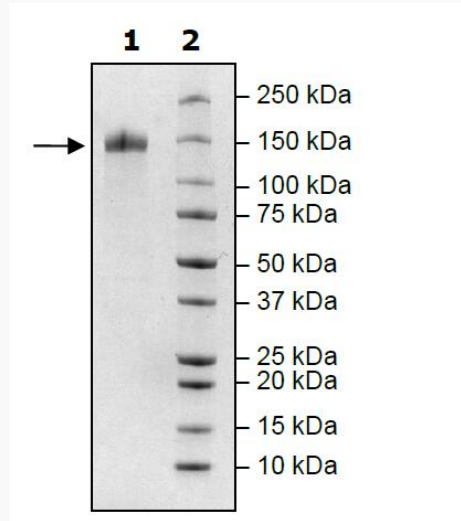


 Tel: 1-631-559-9269 1-516-512-3133

 Email: info@creative-biomart.com  Fax: 1-631-938-8127

 45-1 Ramsey Road, Shirley, NY 11967, USA

**SDS-PAGE of
Coomassie staining**



Lane 1: 4 g SARS-CoV-2 S1; Lane 1: Protein Marker

 Tel: 1-631-559-9269 1-516-512-3133

 Email: info@creative-biomart.com  Fax: 1-631-938-8127

 45-1 Ramsey Road, Shirley, NY 11967, USA