

# Active Recombinant SARS-CoV-2 S protein, His/Flag-tagged

Cat. No. S-003S Lot. No. (See product label)

## SPECIFICATION

<b>Product Overview</b>	Recombinant SARS-CoV-2 Spike protein with His/Flag tag was expressed in Sf9 insect cells.
<b>Species</b>	SARS-CoV-2
<b>Source</b>	Insect Cells
<b>Description</b>	SARS-CoV-2 (Severe Acute Respiratory Syndrome Coronavirus 2) also known as 2019-nCoV (2019 Novel Coronavirus) is a virus that causes illnesses ranging from the common cold to severe diseases. SARS-CoV-2 Spike Protein is composed of S1 domain and S2 domain. S1 contains a receptor-binding domain (RBD) that can specifically bind to angiotensin-converting enzyme 2 (ACE2), the receptor on target cells. ECD is the extra cellular domain of spike protein.
<b>Form</b>	Liquid
<b>Bio-activity</b>	SARS-CoV-2 Spike protein (ECD) can bind with Human ACE2 in functional ELISA assay.
<b>Molecular Mass</b>	135 KD
<b>Purity</b>	> 90% as analyzed by SDS-PAGE
<b>Storage</b>	The product can be stored at -20 centigrade or below. Avoid repeated freezing and thawing cycles. The shelf life of the product is unspecified.

 Tel: 1-631-559-9269 1-516-512-3133

 Email: [info@creative-biomart.com](mailto:info@creative-biomart.com)  Fax: 1-631-938-8127

 45-1 Ramsey Road, Shirley, NY 11967, USA

**Storage Buffer**                      PBS pH 7.2 containing 10% glycerol

## GENE INFORMATION

**Gene Name**                              S surface glycoprotein [ Severe acute respiratory syndrome coronavirus 2 ]

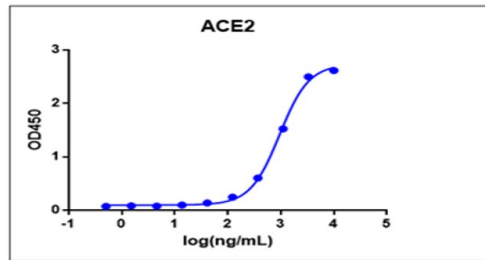
**Official Symbol**                        S

**Synonyms**                                S; surface glycoprotein; spike glycoprotein; surface glycoprotein

**Gene ID**                                    43740568

**UniProt ID**                                P0DTC2

### ELISA assay



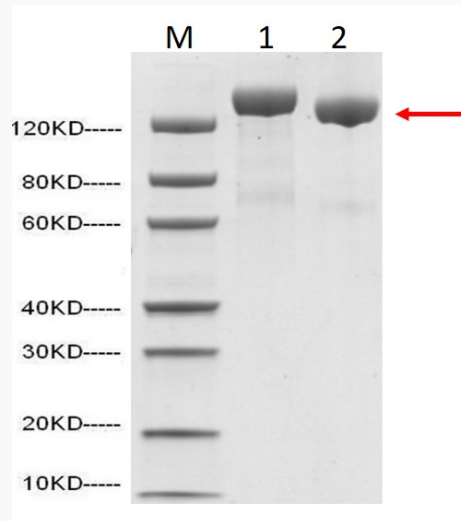
SARS-CoV-2 Spike protein (ECD) can bind with Human ACE2 in functional ELISA assay.

 Tel: 1-631-559-9269    1-516-512-3133

 Email: [info@creative-biomart.com](mailto:info@creative-biomart.com)     Fax: 1-631-938-8127

 45-1 Ramsey Road, Shirley, NY 11967, USA

SDS-PAGE



- 1: 2  $\mu$ g of S-ECD protein , reducing (R)
- 2: 2  $\mu$ g of S-ECD protein, non-reducing (N)