

Active Recombinant SARS-CoV-2 S Protein, His-tagged

Cat. No. S-004S Lot. No. (See product label)

SPECIFICATION

Product Overview	Recombinant SARS-CoV-2 (2019-nCoV) Spike RBD, fused to His-tag at C-terminus, was expressed in insect cell and purified by using conventional chromatography techniques.
Species	SARS-CoV-2
Source	Insect cells
Description	<p>Severe acute respiratory syndrome coronavirus 2 (SARS-CoV-2) is an enveloped, positive-sense, single-stranded RNA virus that causes coronavirus disease 2019 (COVID-19). Virus particles include the RNA genetic material and structural proteins needed for invasion of host cells. Once inside the cell the infecting RNA is used to encode structural proteins that make up virus particles, nonstructural proteins that direct virus assembly, transcription, replication and host control and accessory proteins whose function has not been determined.~ The structural proteins of SARS-CoV-2 include the envelope protein (E), spike or surface glycoprotein (S), membrane protein (M) and the nucleocapsid protein (N). The spike glycoprotein is found on the outside of the virus particle and gives coronavirus viruses their crown-like appearance. This glycoprotein mediates attachment of the virus particle and entry into the host cell. S protein is an important target for vaccine development, antibody therapies and diagnostic antigen-based tests.</p>
Form	Liquid

 Tel: 1-631-559-9269 1-516-512-3133

 Email: info@creative-biomart.com  Fax: 1-631-938-8127

 45-1 Ramsey Road, Shirley, NY 11967, USA

Bio-activity	Measured by its binding ability in a functional ELISA with Human ACE-2.
Molecular Mass	24.8kDa
AA Sequence	RVQPTESIVRFPNITNLCPFGEVFNATRFASVYAWNRKRISNCVADYSVLYNSASFS TFKCYGVSPTKLNDLCFTNVYADSFVIRGDEV RQIAPGQTGKIADYNYKLPDDFTGC VIAWNSNNLDSKVGGNYNLYRLFRKSNLKPFRDISTEIYQAGSTPCNGVEGFNCY FPLQSYGFQPTNGVGYQP YRVVLSFELLHAPATVCGPKK
Endotoxin	< 1 EU/μg of protein (determined by LAL method)
Purity	> 95% by SDS-PAGE
Applications	SDS-PAGE, Bioactivity
Storage	Can be stored at +2 to +8 centigrade for 1 week. For long term storage, aliquot and store at -20 to -83 centigrade. Avoid repeated freezing and thawing cycles.
Concentration	0.5 mg/mL (determined by Absorbance at 280nm)
Storage Buffer	Phosphate-Buffered Saline (pH 7.4) containing 10% glycerol

GENE INFORMATION

Gene Name	S surface glycoprotein [Severe acute respiratory syndrome coronavirus 2]
Official Symbol	S
Synonyms	S; surface glycoprotein; spike glycoprotein; surface glycoprotein; structural protein; spike protein

 Tel: 1-631-559-9269 1-516-512-3133

 Email: info@creative-biomart.com  Fax: 1-631-938-8127

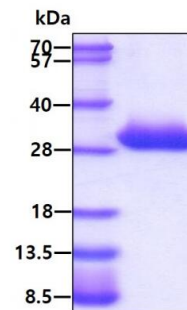
 45-1 Ramsey Road, Shirley, NY 11967, USA

Gene ID 43740568

Protein Refseq YP_009724390

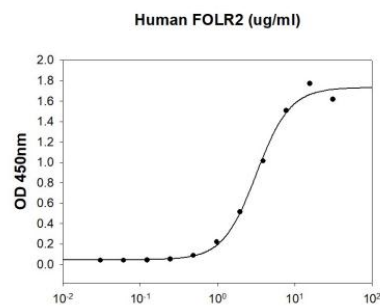
UniProt ID P0DTC2

SDS-PAGE



3 μ g by SDS-PAGE under reducing condition and visualized by coomassie blue stain

Biological Activity



Human SARS-CoV-2 Spike RBD is coated at 5 μ g/mL (100 μ L/well) can bind ACE-2 in a Functional ELISA assay.

Tel: 1-631-559-9269 1-516-512-3133

Email: info@creative-biomart.com Fax: 1-631-938-8127

45-1 Ramsey Road, Shirley, NY 11967, USA