

## Active Recombinant SARS-CoV-2 S Protein, His-tagged

Cat. No. S-005S Lot. No. (See product label)

### SPECIFICATION

<b>Product Overview</b>	Recombinant SARS-CoV-2 Spike protein (RBD) with a His tag was expressed in Human Cells.
<b>Species</b>	SARS-CoV-2
<b>Source</b>	Human Cells
<b>Description</b>	SARS-CoV-2 (Severe Acute Respiratory Syndrome Coronavirus 2) also known as 2019-nCoV (2019 Novel Coronavirus) is a virus that causes illnesses ranging from the common cold to severe diseases. SARS-CoV-2 Spike Protein is composed of S1 domain and S2 domain. S1 contains a receptor-binding domain (RBD) that can specifically bind to angiotensin-converting enzyme 2 (ACE2), the receptor on target cells. It is believed that SARS-CoV-2 Spike Protein (RBD) has potential value for the diagnosis of the virus.
<b>Form</b>	Liquid
<b>Bio-activity</b>	SARS-CoV-2 Spike protein (RBD, His Tag) can bind with Human ACE2 in functional ELISA assay.
<b>Molecular Mass</b>	30 KD
<b>Purity</b>	> 90% as analyzed by SDS-PAGE
<b>Storage</b>	The product can be stored at -20 centigrade or below. Avoid repeated freezing and

 Tel: 1-631-559-9269 1-516-512-3133

 Email: [info@creative-biomart.com](mailto:info@creative-biomart.com)  Fax: 1-631-938-8127

 45-1 Ramsey Road, Shirley, NY 11967, USA

thawing cycles. The shelf life of the product is unspecified.

**Storage Buffer**      PBS, pH 7.2

## GENE INFORMATION

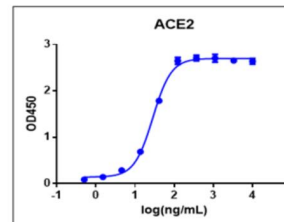
**Gene Name**      S surface glycoprotein [ Severe acute respiratory syndrome coronavirus 2 ]

**Official Symbol**      S

**Synonyms**      S; surface glycoprotein; spike glycoprotein; surface glycoprotein

**Gene ID**      43740568

**UniProt ID**      P0DTC2



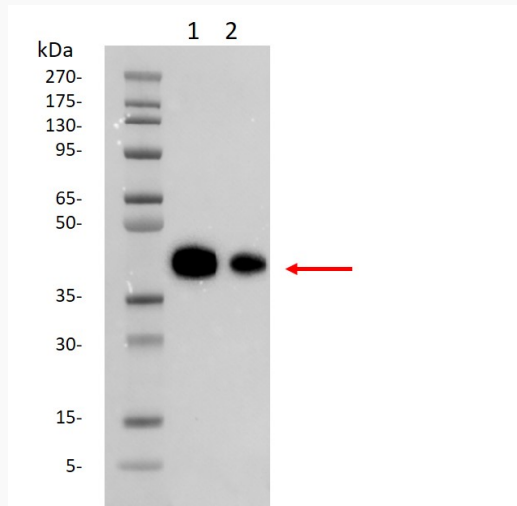
Immobilized ACE-2 Fc Chimera, Human at 2 µg/mL can bind SARS-CoV-2 Spike protein (RBD, His Tag) with a serial dilution. THETM His Tag Antibody [HRP], mAb, Mouse is used as a secondary antibody (0.2 µg/mL).

 Tel: 1-631-559-9269    1-516-512-3133

 Email: [info@creative-biomart.com](mailto:info@creative-biomart.com)     Fax: 1-631-938-8127

 45-1 Ramsey Road, Shirley, NY 11967, USA

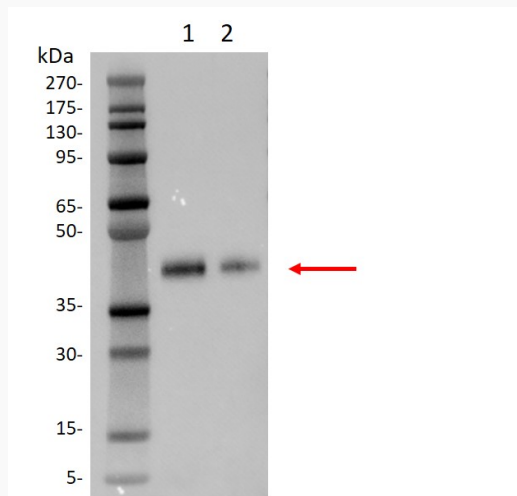
**Western blot  
analysis of SARS-  
CoV-2 Spike protein  
(RBD, His Tag) using  
S1 Antibody**



Lane 1: 10 ng of SARS-CoV-2 Spike protein (RBD, His Tag)

Lane 2: 5 ng of SARS-CoV-2 Spike protein (RBD, His Tag)

**Western blot  
analysis of SARS-  
CoV-2 Spike protein  
(RBD, His Tag) using  
His Antibody.**



Lane 1: 10 ng of SARS-CoV-2 Spike protein (RBD, His Tag)

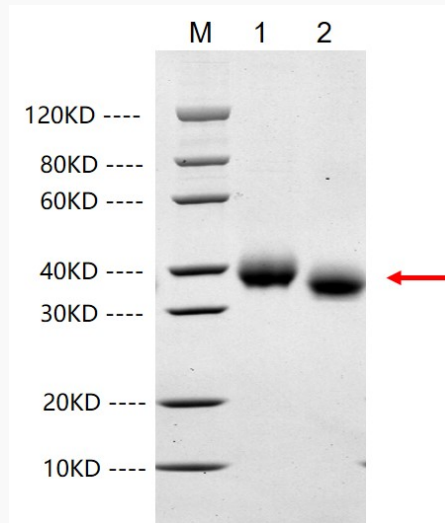
Lane 2: 5 ng of SARS-CoV-2 Spike protein (RBD, His Tag)

 Tel: 1-631-559-9269 1-516-512-3133

 Email: [info@creative-biomart.com](mailto:info@creative-biomart.com)  Fax: 1-631-938-8127

 45-1 Ramsey Road, Shirley, NY 11967, USA

**SDS-PAGE**



1: 2  $\mu$ g of RBD, reducing (R)  
2: 2  $\mu$ g of RBD, non-reducing (N)

 Tel: 1-631-559-9269 1-516-512-3133

 Email: [info@creative-biomart.com](mailto:info@creative-biomart.com)  Fax: 1-631-938-8127

 45-1 Ramsey Road, Shirley, NY 11967, USA