

Active Recombinant SARS-CoV-2 S Protein

Cat. No. S-007S Lot. No. (See product label)

SPECIFICATION

Product Overview	Recombinant SARS-CoV-2 Spike protein (S1) without tag was expressed in Human Cells.
Species	SARS-CoV-2
Source	Human Cells
Description	SARS-CoV-2 (Severe Acute Respiratory Syndrome Coronavirus 2) also known as 2019-nCoV (2019 Novel Coronavirus) is a virus that causes illnesses ranging from the common cold to severe diseases. SARS-CoV-2 Spike Protein is composed of S1 domain and S2 domain. S1 contains a receptor-binding domain (RBD) that can specifically bind to angiotensin-converting enzyme 2 (ACE2), the receptor on target cells. S protein plays an important role in the induction of neutralizing-antibodies and T-cell responses, as well as protective immunity.
Form	Liquid
Bio-activity	SARS-CoV-2 Spike protein (S1) can bind with Human ACE2 in functional ELISA assay.
Molecular Mass	78.3 KD
Purity	> 85% as analyzed by SDS-PAGE
Storage	The product can be stored at -20 centigrade or below. Avoid repeated freezing and

 Tel: 1-631-559-9269 1-516-512-3133

 Email: info@creative-biomart.com  Fax: 1-631-938-8127

 45-1 Ramsey Road, Shirley, NY 11967, USA

thawing cycles. The shelf life of the product is unspecified.

Storage Buffer PBS, pH 7.4

GENE INFORMATION

Gene Name S surface glycoprotein [Severe acute respiratory syndrome coronavirus 2]

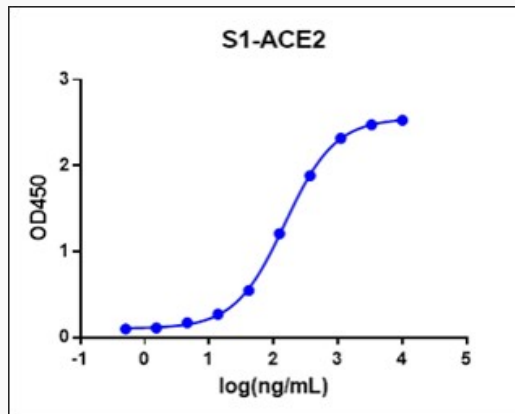
Official Symbol S

Synonyms S; surface glycoprotein; spike glycoprotein; surface glycoprotein

Gene ID 43740568

UniProt ID P0DTC2

ELISA assay



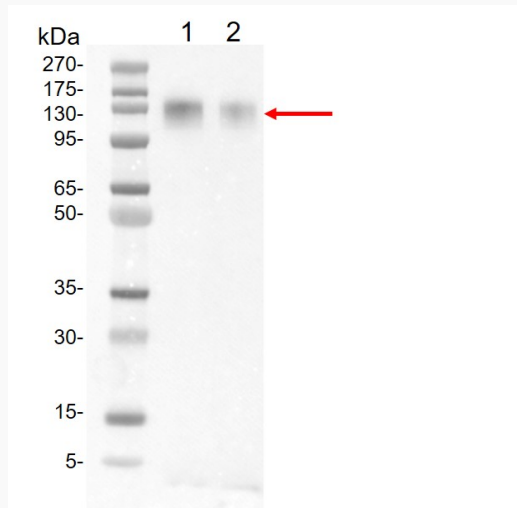
SARS-CoV-2 Spike protein (S1) can bind with Human ACE2 in functional ELISA assay.

 Tel: 1-631-559-9269 1-516-512-3133

 Email: info@creative-biomart.com  Fax: 1-631-938-8127

 45-1 Ramsey Road, Shirley, NY 11967, USA

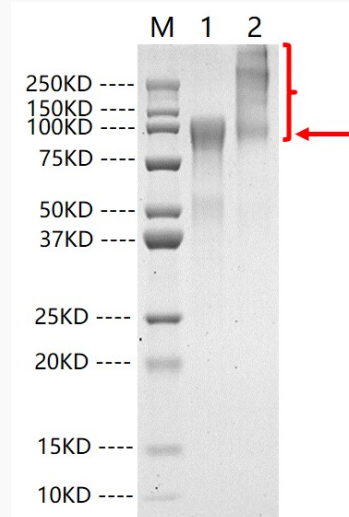
**Western blot
analysis of SARS-
CoV-2 Spike protein
(S1) using S1
Antibody.**



Lane 1: 10 ng of SARS-CoV-2 Spike protein (S1)

Lane 2: 5 ng of SARS-CoV-2 Spike protein (S1)

SDS-PAGE



1: 2 µg of S1 (tag free), reducing (R)

2: 2 µg of S1 (tag free), non-reducing (N)

Tel: 1-631-559-9269 1-516-512-3133

Email: info@creative-biomart.com Fax: 1-631-938-8127

45-1 Ramsey Road, Shirley, NY 11967, USA