

Active Recombinant SARS-CoV-2 S Protein, His-tagged

Cat. No. S-024S Lot. No. (See product label)

SPECIFICATION

Product Overview	Recombinant SARS-CoV-2 (2019-nCoV) Spike S1 Subunit, fused to His-tag at C-terminus, was expressed in HEK293 cell and purified by using conventional chromatography techniques.
Species	SARS-CoV-2
Source	HEK293
Description	<p>Severe acute respiratory syndrome coronavirus 2 (SARS-CoV-2) is an enveloped, positive-sense, single-stranded RNA virus that causes coronavirus disease 2019 (COVID-19). Virus particles include the RNA genetic material and structural proteins needed for invasion of host cells. Once inside the cell the infecting RNA is used to encode structural proteins that make up virus particles, nonstructural proteins that direct virus assembly, transcription, replication and host control and accessory proteins whose function has not been determined.~ The structural proteins of SARS-CoV-2 include the envelope protein (E), spike or surface glycoprotein (S), membrane protein (M) and the nucleocapsid protein (N). The spike glycoprotein is found on the outside of the virus particle and gives coronavirus viruses their crown-like appearance. This glycoprotein mediates attachment of the virus particle and entry into the host cell. S protein is an important target for vaccine development, antibody therapies and diagnostic antigen-based tests.</p>
Form	Liquid

 Tel: 1-631-559-9269 1-516-512-3133

 Email: info@creative-biomart.com  Fax: 1-631-938-8127

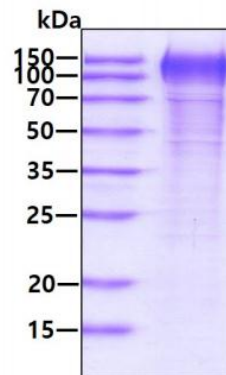
 45-1 Ramsey Road, Shirley, NY 11967, USA

Bio-activity	Measured by its binding ability in a functional ELISA with Human ACE-2.
Molecular Mass	76.2 kDa
AA Sequence	VNLTRTRQLPPAYTNSFTRGVYYPDKVFRSSVLHSTQDLFLPFFSNVTWFHAIHVSG TNGTKRFDNPVLPFNDGVYFASTEKSNIIRGWIFGTTLDSKTQSLIVN NATNVVIKVC EFQFCNDPFLGVYYHKNNKSWMESEFRVYSSANNCTFEYVSQPFLMDLEGKQGNF KNLREFVFKNIDGYFKIYSKHTPINLVRDLPQGFSALEPLVDLPIGINITRFQTLLALHR SYLTPGDSSSGWTAGAAAYYVGYLQPRTFLLKYNENGTITDAVDCALDPLSETKCTL KSFTVEKGIYQTSNFRVQPTESIVRFPNITNLCPFGEVFNATRFASVYAWNRKRISNC VADYSVLVNSASFSTFKCYGVSPTKLNDLCFTNVYADSFVIRGDEV RQIAPGQTGKIA DYNKLPDDFTGCVIAWNSNLD SKVGGNYNYLYR LFRKSNLKPFERDISTEIQAG STPCNGVEGFNCYFPLQSYGFQPTNGVGYQPYRVVLSFELLHAPATVCGPKKSTN LVKNKCVNFNFNGLTGTGVLTESNKKFLPFQQFGRDIADTTDAVRDPQTLEILDITPC SFGGVSVITPGTNTSNQVAVLYQDVNCTEVPVAIHADQLTPTWRVYSTGSNVFQTR AGCLIGAEHVNNSYECDIPIGAGICASYQTQTNSPRRAR
Endotoxin	< 1 EU/μg of protein (determined by LAL method)
Purity	> 85% by SDS-PAGE
Applications	SDS-PAGE, Bioactivity
Storage	Can be stored at +2 to +8 centigrade for 1 week. For long term storage, aliquot and store at -20 to -103 centigrade. Avoid repeated freezing and thawing cycles.
Concentration	0.25 mg/mL (determined by Absorbance at 280nm)
Storage Buffer	Phosphate-Buffered Saline (pH 7.4) containing 10% glycerol


 Tel: 1-631-559-9269 1-516-512-3133

 Email: info@creative-biomart.com  Fax: 1-631-938-8127

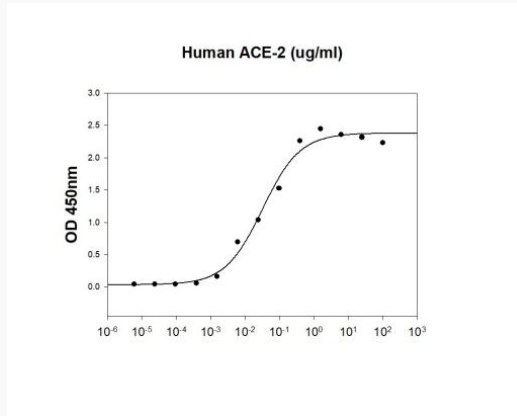
 45-1 Ramsey Road, Shirley, NY 11967, USA

GENE INFORMATION**Gene Name** S surface glycoprotein [Severe acute respiratory syndrome coronavirus 2]**Official Symbol** S**Synonyms** S; surface glycoprotein; spike glycoprotein; surface glycoprotein; structural protein; spike protein**Gene ID** 43740568**Protein Refseq** YP_009724390**UniProt ID** P0DTC2**SDS-PAGE**

3 µg by SDS-PAGE under reducing condition and visualized by coomassie blue stain

 Tel: 1-631-559-9269 1-516-512-3133 Email: info@creative-biomart.com  Fax: 1-631-938-8127 45-1 Ramsey Road, Shirley, NY 11967, USA

Biological Activity



SARS-CoV-2 Spike S1 Subunit is coated at 5µg/mL (100 µL/well) can bind ACE-2 in a Functional ELISA assay.

 Tel: 1-631-559-9269 1-516-512-3133

 Email: info@creative-biomart.com  Fax: 1-631-938-8127

 45-1 Ramsey Road, Shirley, NY 11967, USA