

## Active Recombinant SARS-CoV-2 S Protein, His-tagged

Cat. No. S-031S Lot. No. (See product label)

### SPECIFICATION

<b>Product Overview</b>	Recombinant SARS-CoV-2 (2019-nCoV) Spike RBD, fused to His-tag at C-terminus, was expressed in HEK293 cell and purified by using conventional chromatography techniques.
<b>Species</b>	SARS-CoV-2
<b>Source</b>	HEK293
<b>Description</b>	<p>Severe acute respiratory syndrome coronavirus 2 (SARS-CoV-2) is an enveloped, positive-sense, single-stranded RNA virus that causes coronavirus disease 2019 (COVID-19). Virus particles include the RNA genetic material and structural proteins needed for invasion of host cells. Once inside the cell the infecting RNA is used to encode structural proteins that make up virus particles, nonstructural proteins that direct virus assembly, transcription, replication and host control and accessory proteins whose function has not been determined.~ The structural proteins of SARS-CoV-2 include the envelope protein (E), spike or surface glycoprotein (S), membrane protein (M) and the nucleocapsid protein (N). The spike glycoprotein is found on the outside of the virus particle and gives coronavirus viruses their crown-like appearance. This glycoprotein mediates attachment of the virus particle and entry into the host cell. S protein is an important target for vaccine development, antibody therapies and diagnostic antigen-based tests.</p>
<b>Form</b>	Liquid

 Tel: 1-631-559-9269 1-516-512-3133

 Email: [info@creative-biomart.com](mailto:info@creative-biomart.com)  Fax: 1-631-938-8127

 45-1 Ramsey Road, Shirley, NY 11967, USA

<b>Bio-activity</b>	Measured by its binding ability in a functional ELISA with Human ACE-2.
<b>Molecular Mass</b>	26.3 kDa
<b>AA Sequence</b>	RVQPTEIVRFPNITNLCPFGEVFNATRFASVYAWNRKRISNCVADYSVLYNSASFS TFKCYGVSPTKLNDLCFTNVYADSFVIRGDEVQRQIAPGQTGKIADYNYKLPDDFTGC VIAWNSNNLDSKVGGNYNLYRLFRKSNLKPFRDISTEIYQAGSTPCNGVEGFNCY FPLQSYGFQPTNGVGYQPYRVVLSFELLHAPATVCGPKKSTNLVKNKCVNF
<b>Endotoxin</b>	< 1 EU/μg of protein (determined by LAL method)
<b>Purity</b>	> 95% by SDS-PAGE
<b>Applications</b>	SDS-PAGE, Bioactivity
<b>Storage</b>	Can be stored at +2 to +8 centigrade for 1 week. For long term storage, aliquot and store at -20 to -110 centigrade. Avoid repeated freezing and thawing cycles.
<b>Concentration</b>	0.5 mg/mL (determined by Absorbance at 280nm)
<b>Storage Buffer</b>	Phosphate-Buffered Saline (pH 7.4) containing 10% glycerol

## GENE INFORMATION

<b>Gene Name</b>	S surface glycoprotein [ Severe acute respiratory syndrome coronavirus 2 ]
<b>Official Symbol</b>	S
<b>Synonyms</b>	S; surface glycoprotein; spike glycoprotein; surface glycoprotein; structural protein; spike protein

 Tel: 1-631-559-9269 1-516-512-3133

 Email: [info@creative-biomart.com](mailto:info@creative-biomart.com)  Fax: 1-631-938-8127

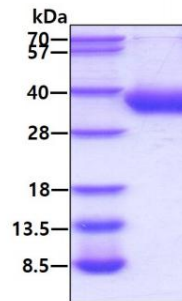
 45-1 Ramsey Road, Shirley, NY 11967, USA

**Gene ID** 43740568

**Protein Refseq** YP\_009724390

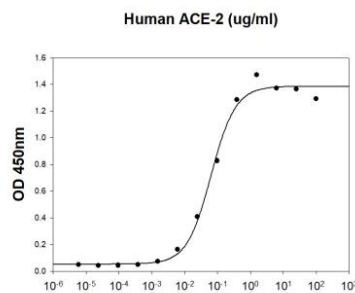
**UniProt ID** P0DTC2

**SDS-PAGE**



3  $\mu$ g by SDS-PAGE under reducing condition and visualized by coomassie blue stain

**Biological Activity**



SARS-CoV-2 Spike RBD is coated at 5 $\mu$ g/mL (100  $\mu$ L/well) can bind ACE-2 in a Functional ELISA assay.

 Tel: 1-631-559-9269 1-516-512-3133

 Email: [info@creative-biomart.com](mailto:info@creative-biomart.com)  Fax: 1-631-938-8127

 45-1 Ramsey Road, Shirley, NY 11967, USA