

Active Recombinant SARS-CoV-2 Spike protein RBD Protein, HRP conjugated, His-tagged

Cat. No. S-1004S Lot. No. (See product label)

SPECIFICATION

Product Overview	Recombinant 2019-nCoV Spike protein S1 subunit, RBD (319-541) was expressed in CHO cells using a C-terminal his tag, and then conjugated to Horse peroxidase (HRP).
Species	SARS-CoV-2
Source	CHO
ProteinLength	319-541 a.a.
Description	The severe acute respiratory syndrome related novel coronavirus SARS-CoV-2 has caused the pandemic of the respiratory diseases (COVID-19) around the world in 2020. The spike glycoprotein (S) of coronavirus belongs to the type I transmembrane protein, which contains two subunits, S1 and S2, which is also known to be the key component to bind with host cells through the interaction with angiotensin-converting enzyme 2 (ACE2). A receptor binding domain (RBD) of S1 can recognize the cell surface receptor and the mutation of RBD could cause higher motility rate.
Bio-activity	Binding ability measured in a functional ELISA. 2019-nCoV Spike protein RBD binds to immobilized human ACE2 (19-740) protein.
Molecular Mass	39 kDa
Purity	> 90%

 Tel: 1-631-559-9269 1-516-512-3133

 Email: info@creative-biomart.com  Fax: 1-631-938-8127

 45-1 Ramsey Road, Shirley, NY 11967, USA

Stability	One year at -20 centigrade from date of shipment.
Storage	Store product at -70 centigrade. For optimal storage, aliquot target into smaller quantities after centrifugation and store at recommended temperature. For most favorable performance, avoid repeated handling and multiple freeze/thaw cycles.
Concentration	0.2 µg/µL
Storage Buffer	1xPBS, pH 7.4 and 50% glycerol.
Conjugation	HRP

GENE INFORMATION

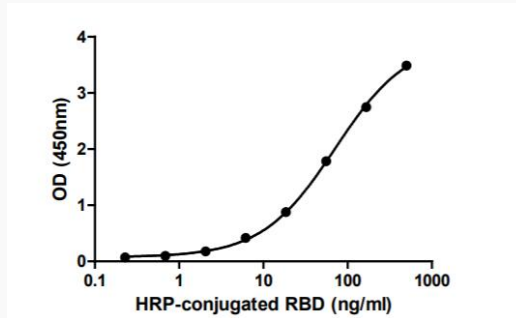
Gene Name	S surface glycoprotein [Severe acute respiratory syndrome coronavirus 2]
Official Symbol	S
Synonyms	S; surface glycoprotein; spike glycoprotein; surface glycoprotein; structural protein; spike protein
Gene ID	43740568
mRNA Refseq	MN908947
Protein Refseq	YP_009724390

 Tel: 1-631-559-9269 1-516-512-3133

 Email: info@creative-biomart.com  Fax: 1-631-938-8127

 45-1 Ramsey Road, Shirley, NY 11967, USA

Activity



Binding ability measured in a functional ELISA. 2019-nCoV Spike protein RBD binds to immobilized human ACE2 (19-740) protein.

 Tel: 1-631-559-9269 1-516-512-3133

 Email: info@creative-biomart.com  Fax: 1-631-938-8127

 45-1 Ramsey Road, Shirley, NY 11967, USA