

Recombinant SARS-CoV-2 S Protein, His-tagged

Cat. No. S-143S Lot. No. (See product label)

SPECIFICATION

Product Overview	Recombinant C-terminal His-tagged SARS-CoV-2 nsp16 methyltransferase (6799-7096) was expressed in E. coli.
Species	SARS-CoV-2
Source	E.coli
ProteinLength	6799-7096
Description	<p>Severe acute respiratory syndrome coronavirus 2 (SARS-CoV-2) is an enveloped, positive-sense, single-stranded RNA virus that causes coronavirus disease 2019 (COVID-19). Virus particles include the RNA genetic material and structural proteins needed for invasion of host cells. Once inside the cell the infecting RNA is used to encode structural proteins that make up virus particles, nonstructural proteins that direct virus assembly, transcription, replication and host control and accessory proteins whose function has not been determined.~ The structural proteins of SARS-CoV-2 include the envelope protein (E), spike or surface glycoprotein (S), membrane protein (M) and the nucleocapsid protein (N). The spike glycoprotein is found on the outside of the virus particle and gives coronavirus viruses their crown-like appearance. This glycoprotein mediates attachment of the virus particle and entry into the host cell. S protein is an important target for vaccine development, antibody therapies and diagnostic antigen-based tests.</p>
Molecular Mass	33.5 kDa

 Tel: 1-631-559-9269 1-516-512-3133

 Email: info@creative-biomart.com  Fax: 1-631-938-8127

 45-1 Ramsey Road, Shirley, NY 11967, USA

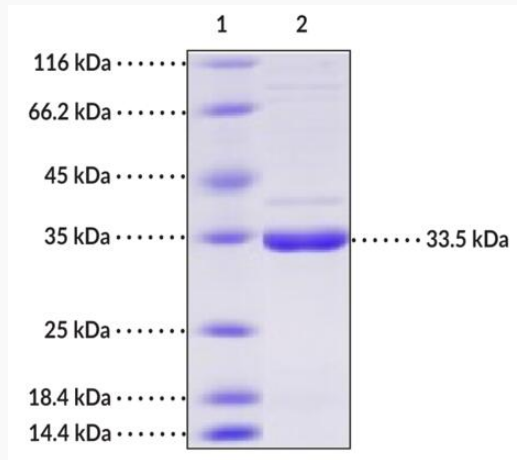
Purity	≥85% estimated by SDS-PAGE
Stability	≥ 1 year
Storage	At -80 centigrade.
Storage Buffer	Sterile 10 mM Tris, pH 7.4, with 250 mM NaCl, and 50% glycerol pH 7.4
GENE INFORMATION	
Gene Name	S surface glycoprotein [Severe acute respiratory syndrome coronavirus 2]
Official Symbol	S
Synonyms	S; surface glycoprotein; spike glycoprotein; surface glycoprotein; structural protein; spike protein
Gene ID	43740568
Protein Refseq	YP_009724390
UniProt ID	P0DTC2

 Tel: 1-631-559-9269 1-516-512-3133

 Email: info@creative-biomart.com  Fax: 1-631-938-8127

 45-1 Ramsey Road, Shirley, NY 11967, USA

**SDS-PAGE analysis
of SARS-CoV-2
nsp16
Methyltransferase**



Lane 1: MW Ladder

Lane 2: SARS-CoV-2 nsp16 Methyltransferase (5 µg)

This protein has a calculated molecular weight of 33.5 kDa.

 Tel: 1-631-559-9269 1-516-512-3133

 Email: info@creative-biomart.com  Fax: 1-631-938-8127

 45-1 Ramsey Road, Shirley, NY 11967, USA