

# Recombinant SARS-CoV-2 3CL-Mpro Protein (AA 1-306), unmodified

Cat. No. S-150S Lot. No. (See product label)

## SPECIFICATION

### Product Overview

Recombinant SARS-CoV-2 (Wuhan seafood market pneumonia virus) 3CL-Mpro Protein (AA 1-306) (unmodified) was expressed in E. coli.

### Species

SARS-CoV-2

### Source

E.coli

### ProteinLength

AA 1-306

### Description

Severe acute respiratory syndrome coronavirus 2 (SARS-CoV-2) is an enveloped, positive-sense, single-stranded RNA virus that causes coronavirus disease 2019 (COVID-19). Virus particles include the RNA genetic material and structural proteins needed for invasion of host cells. Once inside the cell the infecting RNA is used to encode structural proteins that make up virus particles, nonstructural proteins that direct virus assembly, transcription, replication and host control and accessory proteins whose function has not been determined.~ The structural proteins of SARS-CoV-2 include the envelope protein (E), spike or surface glycoprotein (S), membrane protein (M) and the nucleocapsid protein (N). The spike glycoprotein is found on the outside of the virus particle and gives coronavirus viruses their crown-like appearance. This glycoprotein mediates attachment of the virus particle and entry into the host cell. S protein is an important target for vaccine development, antibody therapies and diagnostic antigen-based tests.

 Tel: 1-631-559-9269 1-516-512-3133

 Email: [info@creative-biomart.com](mailto:info@creative-biomart.com)  Fax: 1-631-938-8127

 45-1 Ramsey Road, Shirley, NY 11967, USA

|                       |   |
|-----------------------|---|
| <b>Form</b>           | Liquid  |
| <b>AA Sequence</b>    | SGFRKMAFPSGKVEGCMVQVTCGTTTLNGLWLDDVVYCPRHVICTSEDM LNPNYE<br>DLLIRKSNHNFLVQAGNVQLRVIGHSMQNCV LKLVDTANPKTPKYKFVRIQPGQTF<br>SVLACYNGSPSGVYQCAMRPNFTIKGSFLNGSCGSVGFNIDYDCVSFCYMHHMELP<br>TGVHAGTDLEGNFYGPFVDRQTAQAAGTDTTITVNVLAWLYAAVINGDRWFLNRFT<br>TTLNDFNLVAMKYNYEPLTQDHVDILGPLSAQTGIAVLDMCASLKELLQNGMNGRTIL<br>GSALLEDEFTPFDDVVRQC SGVTFQ |
| <b>Purity</b>         | > 90% as determined by SDS-PAGE   |
| <b>Storage</b>        | Stored and shipped at -80 centigrade  |
| <b>Storage Buffer</b> | PBS, pH 7.4, contains Glycerol as protectant  |

## GENE INFORMATION

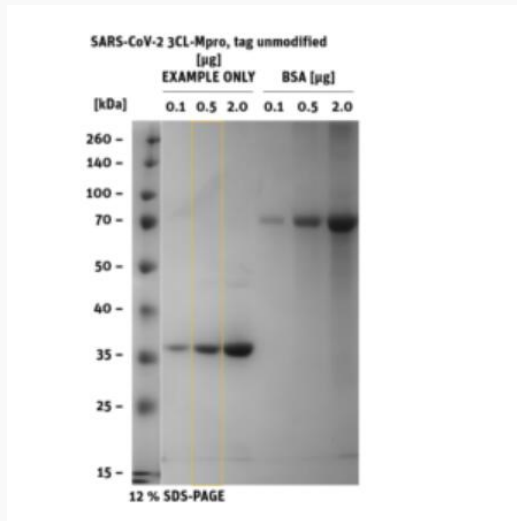
|                        |  |
|------------------------|--|
| <b>Gene Name</b>       | <a href="#">S surface glycoprotein [ Severe acute respiratory syndrome coronavirus 2 ]</a>           |
| <b>Official Symbol</b> | <a href="#">S</a>  |
| <b>Synonyms</b>        | S; surface glycoprotein; spike glycoprotein; surface glycoprotein; structural protein; spike protein |
| <b>Gene ID</b>         | <a href="#">43740568</a>   |
| <b>Protein Refseq</b>  | <a href="#">YP_009724390</a>   |
| <b>UniProt ID</b>      | <a href="#">P0DTC2</a>   |

 Tel: 1-631-559-9269 1-516-512-3133

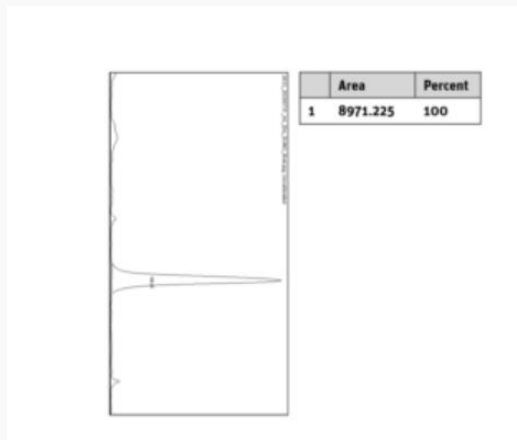
 Email: [info@creative-biomart.com](mailto:info@creative-biomart.com)  Fax: 1-631-938-8127

 45-1 Ramsey Road, Shirley, NY 11967, USA

**SDS-PAGE**



**Histogram of marked  
lane in gel picture**



Tel: 1-631-559-9269 1-516-512-3133

Email: [info@creative-biomart.com](mailto:info@creative-biomart.com) Fax: 1-631-938-8127

45-1 Ramsey Road, Shirley, NY 11967, USA