

Recombinant SARS-CoV-2 S Protein (AA 16-1211), Tag-removed stabilized trimer

Cat. No. S-154S Lot. No. (See product label)

SPECIFICATION

Product Overview

Recombinant SARS-CoV-2 (Wuhan seafood market pneumonia virus) S Protein (AA 16-1211), Tag-removed stabilized trimer, was expressed in HEK293.

Species

SARS-CoV-2

Source

HEK293

ProteinLength

AA 16-1211

Description

Severe acute respiratory syndrome coronavirus 2 (SARS-CoV-2) is an enveloped, positive-sense, single-stranded RNA virus that causes coronavirus disease 2019 (COVID-19). Virus particles include the RNA genetic material and structural proteins needed for invasion of host cells. Once inside the cell the infecting RNA is used to encode structural proteins that make up virus particles, nonstructural proteins that direct virus assembly, transcription, replication and host control and accessory proteins whose function has not been determined.~ The structural proteins of SARS-CoV-2 include the envelope protein (E), spike or surface glycoprotein (S), membrane protein (M) and the nucleocapsid protein (N). The spike glycoprotein is found on the outside of the virus particle and gives coronavirus viruses their crown-like appearance. This glycoprotein mediates attachment of the virus particle and entry into the host cell. S protein is an important target for vaccine development, antibody therapies and diagnostic antigen-based tests.

 Tel: 1-631-559-9269 1-516-512-3133

 Email: info@creative-biomart.com  Fax: 1-631-938-8127

 45-1 Ramsey Road, Shirley, NY 11967, USA

Form	Liquid
AA Sequence	<p>MVNLTRTRQLPPAYTNSFTRGVYYPDKVFRSSVLHSTQDLFLPFFSNVTWFHAIHVS GTN GTKRFDNPVLPFNDGVYFASTEKSNIIIRGWIFGTTLDSTKQSLIVNATNVVVK VCEFQ FCNDPFLGVYYHKNNKSWMESEFRVYSSANNCTFEYVSQPFLMDLEGKQ GNFKNLREFVF KNIDGYFKIYSKHTPINLVRDLPQGFSALEPLVDLPIGINITRFQTLA LHRSYLTPGDS SSGWTAGAAAYVGYLQPRTFLLKYNENGTITDAVDCALDPLSET KCTLKSFTVEKGIYQ TSNFRVQPTESIVRFPNITNLCPFGEVFNATRFASVYAWNRK RISNCVADYSVLYNSASF STFKCYGVSPKLNLCFTNVYADSFVIRGDEVRQIAPG QTGKIADYNYKLPDDFTGCVI AWNSNNLDSKVGGNYNLYRLFRKSNLKPFERDIST EIYQAGSTPCNGVEGFNCYFPLQS YGFQPTNGVGYQPYRVVLSFELLHAPATVC GPKKSTNLVKNKCVNFNFNGLTGTGVLTE SNKKFLPFQQFGRDIADTTDAVRDPQT LEILDITPCSFGGVSVITPGTNTSNQVAVLYQD VNCTEVPVAIHADQLTPTWRVYST GSNVFQTRAGCLIGAEHVNNSYECDIPIGAGICASY QTQTNSPGASVASQSIIAYTM SLGAENSVAYSNNNSIAIPTNFTISVTTEILPVSMTKTSVDCTMYICGDSTECSNLLLQY GSFCTQLNRALTGIAVEQDKNTQEVFAQVKQIYKTPPIKDFGGFNFSQILPDPSKPSK RSFIEDLLFNKVTLADAGFIKQYGDCLGDIAARDLICAQKFNGLTVLPPLLTDEMIAQY TSALLAGTITSGWTFGAGAALQIPFAMQMAYRFNGIGVTQNVLYENQKLIANQFNSAI GKIQDSLSTASALGKLQDVVNQNAQALNTLVKQLSSNFGAISSVLNDILSRLDPPEA EVQIDRLITGRLQSLQTYVTQQLIRAAEIRASANLAATKMSECVLGQSKRVDFCGKGY HLMSFPQSAPHGVVFLHVTVYVPAQEKNFTTAPAICHDGKAHFPREGVVFVSNGTHWF VTQRNFYEPQIITDNTFVSGNCDVVIGIVNNTVYDPLQPELDSFKEELDKYFKNHTS PDVDLGDISGINASVVNIQKEIDRLNEVAKNLNESLIDLQELGKYEQYIK</p>
Purity	> 85% as determined by SDS-PAGE
Storage	Stored and shipped at -80 centigrade
Storage Buffer	PBS, 5% (w/v) Trehalose, pH 7.4

 Tel: 1-631-559-9269 1-516-512-3133

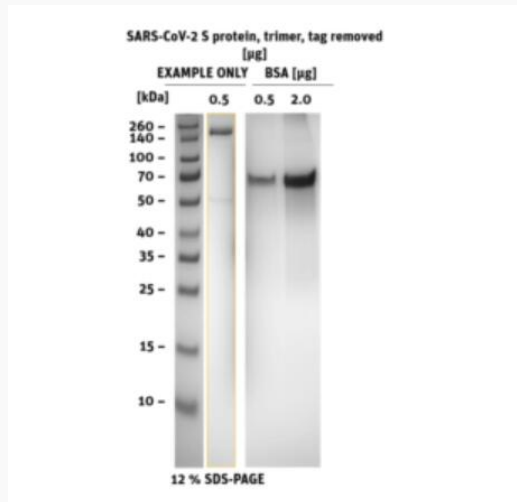
 Email: info@creative-biomart.com  Fax: 1-631-938-8127

 45-1 Ramsey Road, Shirley, NY 11967, USA

GENE INFORMATION

Gene Name	S surface glycoprotein [Severe acute respiratory syndrome coronavirus 2]
Official Symbol	S
Synonyms	S; surface glycoprotein; spike glycoprotein; surface glycoprotein; structural protein; spike protein
Gene ID	43740568
Protein Refseq	YP_009724390
UniProt ID	P0DTC2

SDS-PAGE

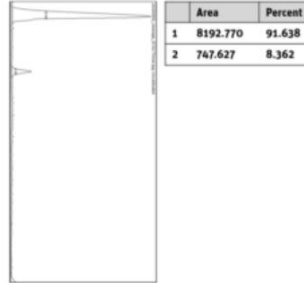


Tel: 1-631-559-9269 1-516-512-3133

Email: info@creative-biomart.com Fax: 1-631-938-8127

45-1 Ramsey Road, Shirley, NY 11967, USA

Histogram of marked
lane in gel picture



 Tel: 1-631-559-9269 1-516-512-3133

 Email: info@creative-biomart.com  Fax: 1-631-938-8127

 45-1 Ramsey Road, Shirley, NY 11967, USA