

Recombinant SARS-CoV-2 (Mu B.1.621 (Columbia)) S1 Protein (RBD) (R346K, E484K, N510Y) (AA 319-541), C-GFP/His-Tagged (cleavable)

Cat. No. S-166S Lot. No. (See product label)

SPECIFICATION

Product Overview Recombinant SARS-CoV-2 (Wuhan seafood market pneumonia virus) S1 Protein (RBD) (R346K, E484K, N510Y) (AA 319-541) with C-GFP/His tag (cleavable) was expressed in HEK293.

Species SARS-CoV-2

Source HEK293

ProteinLength AA 319-541

Description Severe acute respiratory syndrome coronavirus 2 (SARS-CoV-2) is an enveloped, positive-sense, single-stranded RNA virus that causes coronavirus disease 2019 (COVID-19). Virus particles include the RNA genetic material and structural proteins needed for invasion of host cells. Once inside the cell the infecting RNA is used to encode structural proteins that make up virus particles, nonstructural proteins that direct virus assembly, transcription, replication and host control and accessory proteins whose function has not been determined.~ The structural proteins of SARS-CoV-2 include the envelope protein (E), spike or surface glycoprotein (S), membrane protein (M) and the nucleocapsid protein (N). The spike glycoprotein is found on the outside of the virus particle and gives coronavirus viruses their crown-like appearance. This glycoprotein mediates attachment of the virus particle and entry into the host cell. S protein is an important target for vaccine development, antibody

 Tel: 1-631-559-9269 1-516-512-3133

 Email: info@creative-biomart.com  Fax: 1-631-938-8127

 45-1 Ramsey Road, Shirley, NY 11967, USA

therapies and diagnostic antigen-based tests.

Form

Liquid

AA Sequence

MRVQPTESIVRFPNITNLCPFGEVFNATKFASVYAWNRRKRISNCVADYSVLYNSASF
STFKCYGVSPTKLNDLCFTNVYADSFVIRGDEVQRQIAPGQTGKIADYNYKLPDDFTG
CUIAWNSNNLDSKVGGNYLYRLFRKSNLKPFRDISTEIYQAGSTPCNGVKGFNC
YFPLQSYGFQPTYGVGYQPYRVVLSFELLHAPATVCGPKKSTNLVKNKCVNFX ind
icates mutation sites

Purity

> 95% as determined by SDS-PAGE

Storage

Stored and shipped at -80 centigrade

Storage Buffer

PBS, pH 7.4

GENE INFORMATION

Gene Name

S surface glycoprotein [Severe acute respiratory syndrome coronavirus 2]

Official Symbol

S

Synonyms

S; surface glycoprotein; spike glycoprotein; surface glycoprotein; structural protein;
spike protein

Gene ID

43740568

Protein Refseq

YP_009724390

UniProt ID

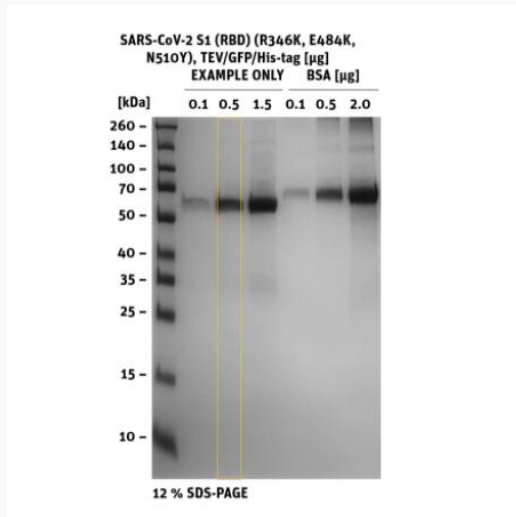
P0DTC2

 Tel: 1-631-559-9269 1-516-512-3133

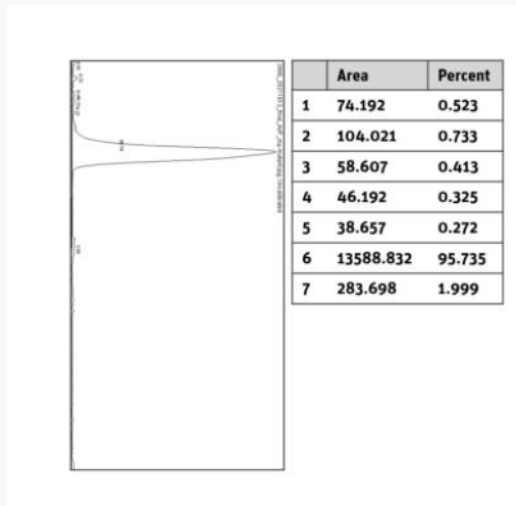
 Email: info@creative-biomart.com  Fax: 1-631-938-8127

 45-1 Ramsey Road, Shirley, NY 11967, USA

SDS-PAGE



Histogram of marked lane in gel picture



Tel: 1-631-559-9269 1-516-512-3133

Email: info@creative-biomart.com Fax: 1-631-938-8127

45-1 Ramsey Road, Shirley, NY 11967, USA