

Recombinant MERS Spike RBD protein, Fc-tagged

Cat. No. S-200M Lot. No. (See product label)

SPECIFICATION

Product Overview	Recombinant MERS Spike Protein RBD (377-588) was expressed in CHO cells using a C-terminal human IgG1 Fc tag.
Species	MERS-CoV
Source	CHO
ProteinLength	377-588
Description	<p>The Middle East respiratory syndrome coronavirus (MERS-CoV) has caused the MERS outbreak that first originated in Saudi Arabia, but since has spread to other countries around the world. The spike glycoprotein (S) of coronavirus belongs to the type I transmembrane protein containing two subunits, S1 and S2, which is known to be the key component to bind with host cells through interaction with dipeptidyl peptidase 4 (DPP4). MERS-CoV can recognize DPP4 through its receptor binding domain (RBD) of S1 to initiate viral infection in humans.</p>
Molecular Mass	58 kDa
Purity	>90%
Applications	ELISA
Stability	One year at -70 centigrade from date of shipment.

 Tel: 1-631-559-9269 1-516-512-3133

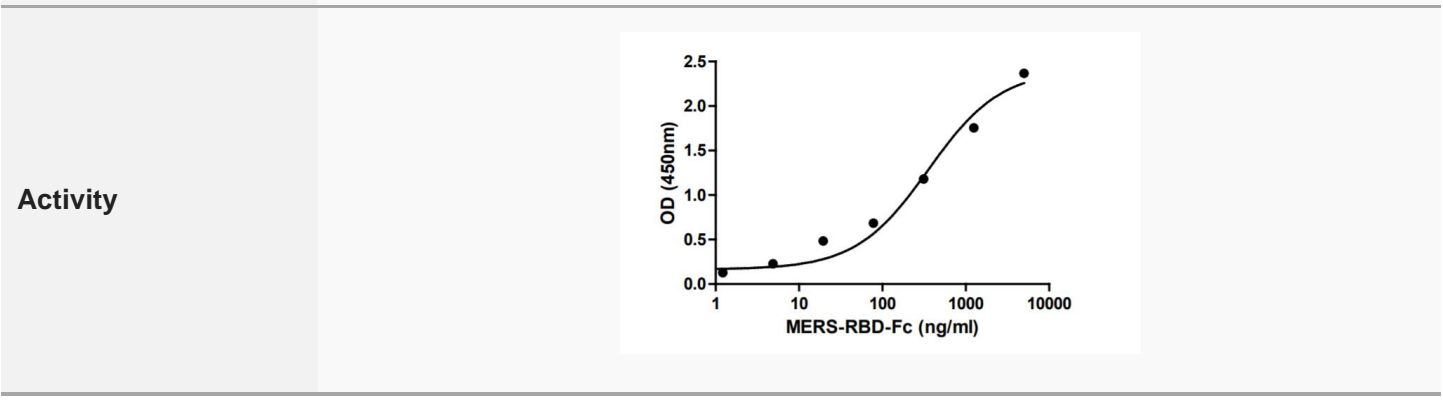
 Email: info@creative-biomart.com  Fax: 1-631-938-8127

 45-1 Ramsey Road, Shirley, NY 11967, USA

Storage	Store product at -70 centigrade. For optimal storage, aliquot targets into smaller quantities after centrifugation and store at recommended temperature. For most favorable performance, avoid repeated handling and multiple freeze/thaw cycles.
Concentration	1 µg/µL
Storage Buffer	Recombinant protein stored in 50mM Tris-HCl, pH 7.5, 90mM Glycine.
Shipping	Dry ice

GENE INFORMATION

Gene Name	S spike protein [Middle East respiratory syndrome-related coronavirus]
Official Symbol	S
Synonyms	S; spike protein; spike protein; surface glycoprotein
Gene ID	14254594
Protein Refseq	YP_009047204



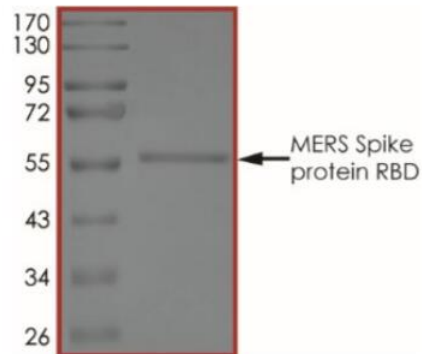
Tel: 1-631-559-9269 1-516-512-3133

Email: info@creative-biomart.com Fax: 1-631-938-8127

45-1 Ramsey Road, Shirley, NY 11967, USA

Binding ability measured in a functional ELISA. MERS Spike Protein RBD can bind to immobilized DPP4 (29-766) protein.

SDS-PAGE



The purity of MERS Spike protein was determined to be 90% by densitometry, approx. MW 58 kDa.

 Tel: 1-631-559-9269 1-516-512-3133

 Email: info@creative-biomart.com  Fax: 1-631-938-8127

 45-1 Ramsey Road, Shirley, NY 11967, USA