

## Recombinant 2019-nCoV Spike Protein S1, His-tagged

Cat. No. S-219C Lot. No. (See product label)

### SPECIFICATION

<b>Product Overview</b>	Recombinant 2019-nCoV Spike protein S1 (16-685) was expressed in CHO cells using a C-terminal His-tag.
<b>Species</b>	Sars-Cov-2
<b>Source</b>	CHO
<b>ProteinLength</b>	16-685
<b>Description</b>	<p>The spike (S) glycoprotein of coronaviruses is known to be essential in the binding of the virus to the host cell at the advent of the infection process. Most notable is severe acute respiratory syndrome (SARS). The severe acute respiratory syndrome-coronavirus (SARS-CoV) spike (S) glycoprotein alone can mediate the membrane fusion required for virus entry and cell fusion. It is also a major immunogen and a target for entry inhibitors. The SARS-CoV-2 spike (S) protein is composed of two subunits; the S1 subunit contains a receptor-binding domain that engages with the host cell receptor angiotensin-converting enzyme 2 and the S2 subunit mediates fusion between the viral and host cell membranes. The S RBD protein plays key parts in the induction of neutralizing-antibody and T-cell responses, as well as protective immunity, during infection with SARS-CoV-2 (2019-nCoV) as in recent COVID-19 outbreak.</p>
<b>Molecular Mass</b>	125 kDa
<b>Purity</b>	>90%

 Tel: 1-631-559-9269 1-516-512-3133

 Email: [info@creative-biomart.com](mailto:info@creative-biomart.com)  Fax: 1-631-938-8127

 45-1 Ramsey Road, Shirley, NY 11967, USA

<b>Applications</b>	FACS
<b>Stability</b>	One year at -70 centigrade from date of shipment.
<b>Storage</b>	Store product at -70 centigrade. For optimal storage, aliquot targets into smaller quantities after centrifugation and store at recommended temperature. For most favorable performance, avoid repeated handling and multiple freeze/thaw cycles.
<b>Concentration</b>	0.2 µg/µL
<b>Storage Buffer</b>	Recombinant protein stored in 50mM sodium phosphate, pH 7.5, 300mM NaCl, 150mM imidazole.
<b>Shipping</b>	Dry ice

## GENE INFORMATION

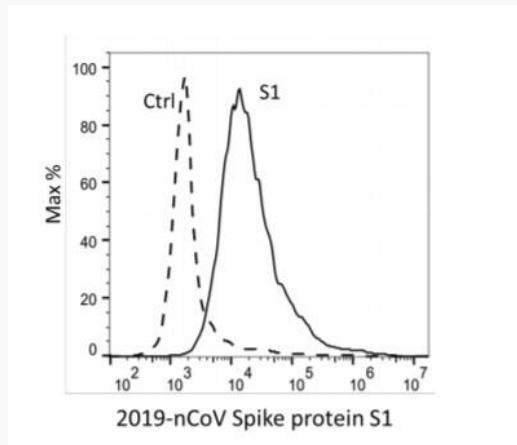
<b>Gene Name</b>	<a href="#">S surface glycoprotein [ Severe acute respiratory syndrome coronavirus 2 ]</a>
<b>Official Symbol</b>	<a href="#">S</a>
<b>Synonyms</b>	S; surface glycoprotein; spike glycoprotein; surface glycoprotein; structural protein; spike protein
<b>Gene ID</b>	<a href="#">43740568</a>
<b>mRNA Refseq</b>	<a href="#">MN908947</a>
<b>Protein Refseq</b>	<a href="#">YP_009724390</a>

 Tel: 1-631-559-9269 1-516-512-3133

 Email: [info@creative-biomart.com](mailto:info@creative-biomart.com)  Fax: 1-631-938-8127

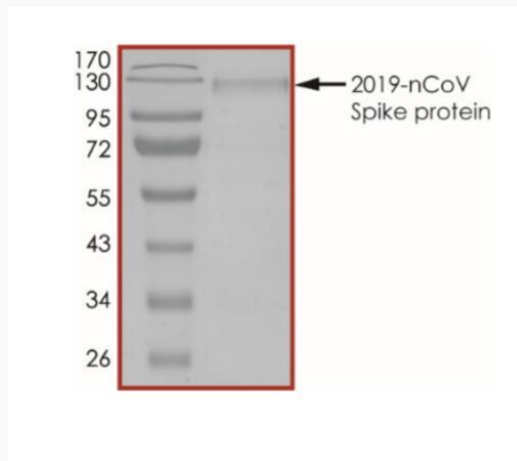
 45-1 Ramsey Road, Shirley, NY 11967, USA

**Activity**



FACS assay showed 2019-nCoV Spike protein S1 can bind to ACE2 overexpressing cells. ACE2 overexpressing cells were stained with 2019-nCoV Spike protein S1, followed by anti-2019CoV Spike Protein antibody and fluorescence-conjugated secondary antibody.

**SDS-PAGE**



The purity of nCoV-S1 was determined to be 90% by densitometry, approx. MW 125 kDa.