

Recombinant SARS-CoV-2 S Protein (S1 Subunit, Val16-Cys671), C-His tagged, Animal-free, Carrier-free

Cat. No. S-224S Lot. No. (See product label)

SPECIFICATION

Product Overview	Recombinant SARS-CoV-2 S Protein (S1 Subunit, Val16-Cys671) with C-His tag was expressed in E. coli and Animal-free as well as Carrier-free.
Species	SARS-CoV-2
Source	E.coli
ProteinLength	Val16-Cys671
Description	SARS-CoV-2 is a kind of coronavirus which full name is severe acute respiratory syndrome coronavirus 2. SARS-CoV-2 is contagious that causes the respiratory diseases and lung diseases which make difficulty breathing. SARS-CoV-2 do the spillover event in 2019 because it has genetic diversity. SARS-CoV-2 is composed by four subunits (spike, envelope, membrane and nucleocapsid proteins). Its RNA genome is encapsulated with nucleocapsid protein. The viral envelope is comprised of spike, envelope and membrane protein. SARS-CoV-2 has high affinity to ACE2, which is highly expression in intestines, kidney, and heart.
Form	Lyophilized
Molecular Mass	The protein has a calculated MW of 74.34 kDa. The protein migrates as 63-75 kDa under reducing condition (SDS-PAGE analysis).

 Tel: 1-631-559-9269 1-516-512-3133

 Email: info@creative-biomart.com  Fax: 1-631-938-8127

 45-1 Ramsey Road, Shirley, NY 11967, USA

Purity	>98% as determined by SDS-PAGE analysis.
Storage	This product is stable after storage at: -20 centigrade for 12 months in lyophilized state from date of receipt. -20 or -80 centigrade for 1 month under sterile conditions after reconstitution. Avoid repeated freeze/thaw cycles.
Storage Buffer	Lyophilized from a 0.2 µm filtered solution of PBS, pH 8.0.
Reconstitution	It is recommended to reconstitute the lyophilized protein in sterile H ₂ O to a concentration not less than 200 µg/mL and incubate the stock solution for at least 20 min to ensure sufficient re-dissolved.
Shipping	The product is shipped with polar packs. Upon receipt, store it immediately at -20 centigrade or lower for long term storage.

GENE INFORMATION

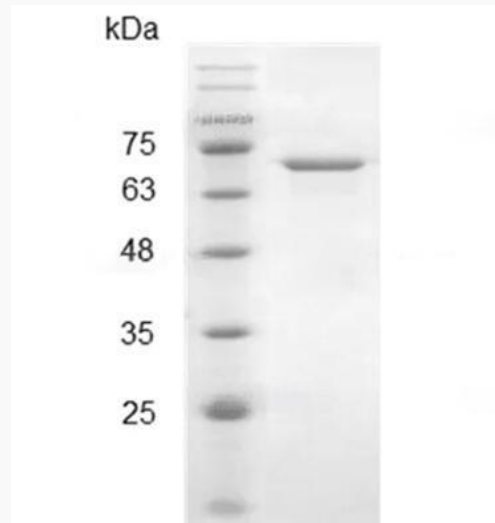
Gene Name	S surface glycoprotein [Severe acute respiratory syndrome coronavirus 2]
Official Symbol	S
Synonyms	S; surface glycoprotein; spike glycoprotein; structural protein; spike protein
Gene ID	43740568
Protein Refseq	YP_009724390
UniProt ID	P0DTC2

 Tel: 1-631-559-9269 1-516-512-3133

 Email: info@creative-biomart.com  Fax: 1-631-938-8127

 45-1 Ramsey Road, Shirley, NY 11967, USA

**SDS-PAGE analysis
of recombinant
SARS-CoV-2 spike
protein (S1 subunit).**



 Tel: 1-631-559-9269 1-516-512-3133

 Email: info@creative-biomart.com  Fax: 1-631-938-8127

 45-1 Ramsey Road, Shirley, NY 11967, USA