

Recombinant SARS-CoV-2 (Delta B1.617.2 Variant) Trimeric Spike Protein (Ser13-Pro1213), C-His tagged, Animal-free, Carrier-free

Cat. No. S-227S Lot. No. (See product label)

SPECIFICATION

Product Overview	Recombinant SARS-CoV-2 S Protein (Ser13-Pro1213) with C-His tag was expressed in HEK293 and Animal-free as well as Carrier-free.
Species	SARS-CoV-2
Source	HEK293
ProteinLength	Ser13-Pro1213
Description	Coronaviruses (Delta B1.617.2 Variant) are enveloped positive-sense RNA viruses. Spike protein on the viral envelope and the cognate receptor on the surface of host cells that are essential for entry into host cells upon receptor binding and membrane fusion. Spike proteins are target for neutralization antibody, and mediate membrane fusion and virus entry. Trimeric spike protein is about 180kDa, and contains two subunits, S1 and S2, mediating attachment and membrane fusion.
Form	Liquid
Molecular Mass	The protein has a calculated MW of 133.12 kDa. The protein migrates above 180 kDa under reducing condition (SDS-PAGE analysis).
Purity	>98% as determined by SDS-PAGE analysis.

 Tel: 1-631-559-9269 1-516-512-3133

 Email: info@creative-biomart.com  Fax: 1-631-938-8127

 45-1 Ramsey Road, Shirley, NY 11967, USA

Storage	This product is stable after storage at: -80 centigrade for long-term storage under sterile conditions. Avoid repeated free-thaw cycles.
Storage Buffer	Phosphate buffered saline, pH 7.4.
Shipping	The product is shipped with polar packs. Upon receipt, store it immediately at -80 centigrade or lower for long term storage.

GENE INFORMATION

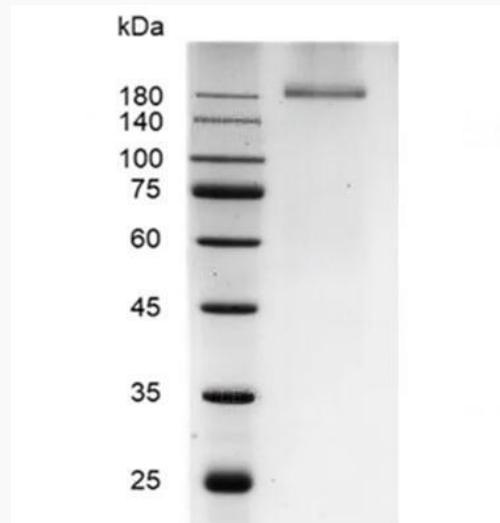
Gene Name	S surface glycoprotein [Severe acute respiratory syndrome coronavirus 2]
Official Symbol	S
Synonyms	S; surface glycoprotein; spike glycoprotein; structural protein; spike protein
Gene ID	43740568
Protein Refseq	YP_009724390
UniProt ID	P0DTC2

 Tel: 1-631-559-9269 1-516-512-3133

 Email: info@creative-biomart.com  Fax: 1-631-938-8127

 45-1 Ramsey Road, Shirley, NY 11967, USA

**SDS-PAGE analysis
of SARS-CoV-2
Trimeric Spike
Protein (Delta
B1.617.2 Variant).**



 Tel: 1-631-559-9269 1-516-512-3133

 Email: info@creative-biomart.com  Fax: 1-631-938-8127

 45-1 Ramsey Road, Shirley, NY 11967, USA