

Recombinant SARS-CoV-2 (Delta B1.617.2 Variant) S Protein (RBD, Arg1-Phe223), N-His-SUMO tagged, Animal-free, Carrier-free

Cat. No. S-228S Lot. No. (See product label)

SPECIFICATION

Product Overview	Recombinant (Delta B1.617.2 Variant) S Protein (RBD, Arg1-Phe223) with N-His-SUMO tag was expressed in HEK293 and Animal-free as well as Carrier-free.
Species	SARS-CoV-2
Source	HEK293
ProteinLength	Arg1-Phe223
Description	<p>Coronaviruses are enveloped positive-sense RNA viruses. Spike protein on the viral envelope and the cognate receptor on the surface of host cells that are essential for entry into host cells upon receptor binding and membrane fusion. Spike proteins are target for neutralization antibody, and mediate membrane fusion and virus entry.</p> <p>Receptor-binding domain (RBD), which is the S protein mediates viral entry into host cells by first binding to a host receptor.</p>
Form	Liquid
Molecular Mass	<p>The protein has a calculated MW of 36.70 kDa.</p> <p>The protein migrates as 45-60 kDa under reducing condition (SDS-PAGE analysis).</p>
Purity	>98% as determined by SDS-PAGE analysis.

 Tel: 1-631-559-9269 1-516-512-3133

 Email: info@creative-biomart.com  Fax: 1-631-938-8127

 45-1 Ramsey Road, Shirley, NY 11967, USA

Storage	This product is stable after storage at: -80 centigrade for long-term storage under sterile conditions. Avoid repeated free-thaw cycles.
Storage Buffer	Phosphate buffered saline, pH 7.4.
Shipping	The product is shipped with polar packs. Upon receipt, store it immediately at -80 centigrade or lower for long term storage.

GENE INFORMATION

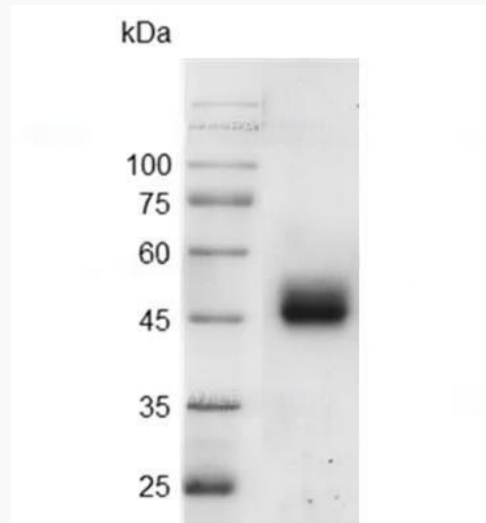
Gene Name	S surface glycoprotein [Severe acute respiratory syndrome coronavirus 2]
Official Symbol	S
Synonyms	S; surface glycoprotein; spike glycoprotein; structural protein; spike protein
Gene ID	43740568
Protein Refseq	YP_009724390
UniProt ID	P0DTC2

 Tel: 1-631-559-9269 1-516-512-3133

 Email: info@creative-biomart.com  Fax: 1-631-938-8127

 45-1 Ramsey Road, Shirley, NY 11967, USA

**SDS-PAGE analysis
of SARS-CoV-2 Spike
Protein RBD (Delta
B1.617.2 Variant).**



 Tel: 1-631-559-9269 1-516-512-3133

 Email: info@creative-biomart.com  Fax: 1-631-938-8127

 45-1 Ramsey Road, Shirley, NY 11967, USA