

## Recombinant SARS-CoV-2 S (S1 Subunit) Protein, Fc-tagged(C-ter)

Cat. No. S-286S Lot. No. (See product label)

### SPECIFICATION

**Product Overview** Recombinant SARS-CoV-2 S (S1 Subunit) Protein with Fc tag (C-ter) was expressed in HEK293.

**Species** SARS-CoV-2

**Source** HEK293

**ProteinLength** Val16-Arg685

#### Description

Severe acute respiratory syndrome coronavirus 2 (SARS-CoV-2) is an enveloped, positive-sense, single-stranded RNA virus that causes coronavirus disease 2019 (COVID-19). Virus particles include the RNA genetic material and structural proteins needed for invasion of host cells. Once inside the cell the infecting RNA is used to encode structural proteins that make up virus particles, nonstructural proteins that direct virus assembly, transcription, replication and host control and accessory proteins whose function has not been determined.~ The structural proteins of SARS-CoV-2 include the envelope protein (E), spike or surface glycoprotein (S), membrane protein (M) and the nucleocapsid protein (N). The spike glycoprotein is found on the outside of the virus particle and gives coronavirus viruses their crown-like appearance. This glycoprotein mediates attachment of the virus particle and entry into the host cell. S protein is an important target for vaccine development, antibody therapies and diagnostic antigen-based tests.

 Tel: 1-631-559-9269 1-516-512-3133

 Email: [info@creative-biomart.com](mailto:info@creative-biomart.com)  Fax: 1-631-938-8127

 45-1 Ramsey Road, Shirley, NY 11967, USA

<b>Form</b>	Powder
<b>Endotoxin</b>	Endotoxin level is less than 0.1 EU/μg of the protein, as determined by the LAL test.
<b>Purity</b>	> 85% (by SDS-PAGE)
<b>Applications</b>	Binding, SDS-PAGE
<b>Notes</b>	For laboratory research only, not for drug, diagnostic or other use.
<b>Storage</b>	Lyophilized protein should be stored at -20°C or -80°C. After reconstitution, aliquot and store at -20°C for up to one month, at 2-8°C for up to one week. Storage in frost free freezers is not recommended. Avoid repeated freeze/thaw cycles. Suggest spin the vial prior to opening.
<b>Storage Buffer</b>	PBS (pH 7.4)
<b>Reconstitution</b>	Reconstitute to a concentration of 0.1-0.5 mg/ml in sterile distilled water.

## GENE INFORMATION

<b>Gene Name</b>	<a href="#">S surface glycoprotein [ Severe acute respiratory syndrome coronavirus 2 ]</a>
<b>Official Symbol</b>	<a href="#">S</a>
<b>Synonyms</b>	S; surface glycoprotein; spike glycoprotein; surface glycoprotein; structural protein; spike protein
<b>Gene ID</b>	<a href="#">43740568</a>
<b>Protein Refseq</b>	<a href="#">YP_009724390</a>

 Tel: 1-631-559-9269 1-516-512-3133

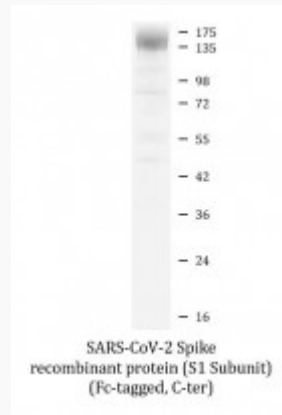
 Email: [info@creative-biomart.com](mailto:info@creative-biomart.com)  Fax: 1-631-938-8127

 45-1 Ramsey Road, Shirley, NY 11967, USA

UniProt ID

P0DTC2

SDS-PAGE



 Tel: 1-631-559-9269 1-516-512-3133

 Email: [info@creative-biomart.com](mailto:info@creative-biomart.com)  Fax: 1-631-938-8127

 45-1 Ramsey Road, Shirley, NY 11967, USA