

Recombinant SARS-CoV-2 S (S1 Subunit) Protein, His-tagged(C-ter)

Cat. No. S-287S Lot. No. (See product label)

SPECIFICATION

Product Overview

Recombinant SARS-CoV-2 S (S1 Subunit) Protein with His tag (C-ter) was expressed in E. coli.

Species

SARS-CoV-2

Source

E.coli

Description

Severe acute respiratory syndrome coronavirus 2 (SARS-CoV-2) is an enveloped, positive-sense, single-stranded RNA virus that causes coronavirus disease 2019 (COVID-19). Virus particles include the RNA genetic material and structural proteins needed for invasion of host cells. Once inside the cell the infecting RNA is used to encode structural proteins that make up virus particles, nonstructural proteins that direct virus assembly, transcription, replication and host control and accessory proteins whose function has not been determined.~ The structural proteins of SARS-CoV-2 include the envelope protein (E), spike or surface glycoprotein (S), membrane protein (M) and the nucleocapsid protein (N). The spike glycoprotein is found on the outside of the virus particle and gives coronavirus viruses their crown-like appearance. This glycoprotein mediates attachment of the virus particle and entry into the host cell. S protein is an important target for vaccine development, antibody therapies and diagnostic antigen-based tests.

Form

Powder

 Tel: 1-631-559-9269 1-516-512-3133

 Email: info@creative-biomart.com  Fax: 1-631-938-8127

 45-1 Ramsey Road, Shirley, NY 11967, USA

AA Sequence

MVNLTTRTQLPPAYTNSFTRGVYYPDKVFRSSVLHSTQDLFLPFFSNVTWFHAIHVS
 GTNGTKRFDNPVLPFNDGVYFASTEKSNIRGWIFGTTLDSTQSLIVNNATNVVIKV
 CEFQFCNDPFLGVYYHKNNKSWMESEFRVYSSANNCTFEYVSQPFLMDLEGKQGN
 FKNLREFVFKNIDGYFKIYSKHTPINLVRDLPPQGFSALEPLVDLPIGINITRFQTLALH
 RSYLTPGDSSSGWTAGAAAYVGYLQPRTFLLKYNENGTITDAVDCALDPLSETKCT
 LKSFTVEKGIYQTSNFRVQPTESIVRFPNITNLCPFGEVFNATRFASVYAWNRKRISN
 CVADYSVLYNSASFSTFKCYGVSPTKLNLDLFTNVYADSFVIRGDEVRQIAPGQTGK
 IADYNYKLPDDFTGCVIAWNSNNLDSKVGGNLYRLFRKSNLKPFERDISTEYQA
 GSTPCNGVEGFNCYFPLQSYGFQPTNGVGYQPYRVVLSFELLHAPATVCGPKKST
 NLVKNKCVNFNGLTGTGVLTESNKKFLPFQQFGRDIADTTDAVRDPQTLEILDITP
 CSFGGVSVITPGTNTSNQVAVLYQDVNCTEVPVAIHADQLTPTWRVYSTGSNVFQT
 RAGCLIGAEHVNSYECDIPIGAGIC

Endotoxin Endotoxin level is less than 0.1 EU/μg of the protein, as determined by the LAL test.

Purity > 98% (by SDS-PAGE)

Applications SDS-PAGE

Notes For laboratory research only, not for drug, diagnostic or other use.

Storage Lyophilized protein should be stored at -20°C. After reconstitution, aliquot and store at -20°C or -80°C for up to one month. Storage in frost free freezers is not recommended. Avoid repeated freeze/thaw cycles. Suggest spin the vial prior to opening.

Storage Buffer PBS (pH 7.4)

Reconstitution It is recommended to reconstitute the lyophilized protein in sterile water to a concentration not less than 100 μg/mL and incubate the stock solution for at least 20

 Tel: 1-631-559-9269 1-516-512-3133

 Email: info@creative-biomart.com  Fax: 1-631-938-8127

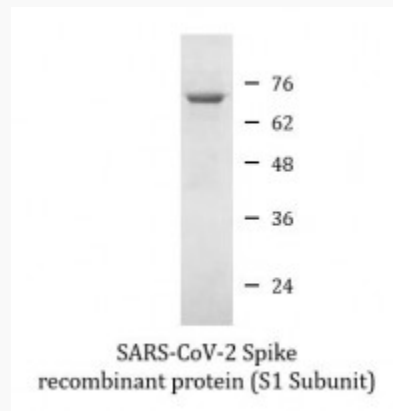
 45-1 Ramsey Road, Shirley, NY 11967, USA

min at room temperature to make sure the protein is dissolved completely.

GENE INFORMATION

Gene Name	S surface glycoprotein [Severe acute respiratory syndrome coronavirus 2]
Official Symbol	S
Synonyms	S; surface glycoprotein; spike glycoprotein; surface glycoprotein; structural protein; spike protein
Gene ID	43740568
Protein Refseq	YP_009724390
UniProt ID	P0DTC2

SDS-PAGE



 Tel: 1-631-559-9269 1-516-512-3133

 Email: info@creative-biomart.com  Fax: 1-631-938-8127

 45-1 Ramsey Road, Shirley, NY 11967, USA