

Recombinant SARS-CoV-2 (D614G Mutant) Spike Glycoprotein (Trimeric), His-tagged

Cat. No. S-316S Lot. No. (See product label)

SPECIFICATION

Product Overview	Trimeric SARS-CoV-2 (D614G mutant) spike protein in prefusion confirmation contains Spike protein amino acids 1-1208 with proline substitutions at residues 986 and 987, a GSAS substitution at the furin cleavage site (residues 682–685), manufactured in Chinese hamster ovary (CHO) cells. C-terminal transmembrane region is replaced with a trimerization domain and a polyhistidine tag.
Species	SARS-COV-2
Source	CHO
ProteinLength	1-1208 a.a.
Form	Liquid
Molecular Mass	~400 kDa
Endotoxin	<1.0 EU/μg
Purity	Greater than 90% purity by SDS-PAGE.
Storage	Short Term Storage: -20 centigrade Long Term Storage: -80 centigrade Avoid repeated freeze-thaw cycles.

 Tel: 1-631-559-9269 1-516-512-3133

 Email: info@creative-biomart.com  Fax: 1-631-938-8127

 45-1 Ramsey Road, Shirley, NY 11967, USA

Storage Buffer PBS, pH 7.4

Shipping Dry Ice

GENE INFORMATION

Gene Name S surface glycoprotein [Severe acute respiratory syndrome coronavirus 2]

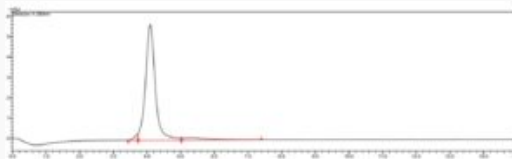
Official Symbol S

Synonyms S; surface glycoprotein; spike glycoprotein; surface glycoprotein; structural protein; spike protein

Gene ID 43740568

mRNA Refseq MN908947

Protein Refseq YP_009724390



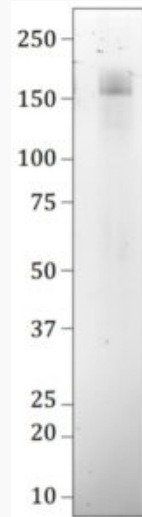
SEC

Verification of purity and size of the recombinant trimeric SARS-CoV-2 D614G Spike Protein under non-denaturing conditions. Size-exclusion chromatography (SEC) plot with peak at 4.0 minutes, corresponding to a size of ~400kD.

 Tel: 1-631-559-9269 1-516-512-3133

 Email: info@creative-biomart.com  Fax: 1-631-938-8127

 45-1 Ramsey Road, Shirley, NY 11967, USA

SDS-PAGE

Verification of size and purity and size of trimeric SARS-CoV-2 D614G spike protein under denaturing conditions. 7.5% SDS-PAGE gel with a band corresponding to the size of the spike monomer; ~150 kD.

 Tel: 1-631-559-9269 1-516-512-3133

 Email: info@creative-biomart.com  Fax: 1-631-938-8127

 45-1 Ramsey Road, Shirley, NY 11967, USA