

Active Recombinant 2019-nCoV RBD-N Protein Chimera Protein, His-tagged

Cat. No. S-590S Lot. No. (See product label)

SPECIFICATION

Product Overview Recombinant 2019-nCoV's N-terminal Spike S1 RBD (319-541) fused to Nucleocapsid (237-419) protein with a linker HSA (human serum albumin) was expressed in CHO cells using a C-terminal His tag.

Species SARS-CoV-2

Source CHO

ProteinLength RBD (319-541) / N protein (237-419)

Description Severe acute respiratory syndrome coronavirus 2 (SARS-CoV-2) is an enveloped, positive-sense, single-stranded RNA virus that causes coronavirus disease 2019 (COVID-19). Virus particles include the RNA genetic material and structural proteins needed for invasion of host cells. Once inside the cell the infecting RNA is used to encode structural proteins that make up virus particles, nonstructural proteins that direct virus assembly, transcription, replication and host control and accessory proteins whose function has not been determined.~ The structural proteins of SARS-CoV-2 include the envelope protein (E), spike or surface glycoprotein (S), membrane protein (M) and the nucleocapsid protein (N). The spike glycoprotein is found on the outside of the virus particle and gives coronavirus viruses their crown-like appearance. This glycoprotein mediates attachment of the virus particle and entry into the host cell. S protein is an important target for vaccine development, antibody therapies and diagnostic antigen-based tests.

 Tel: 1-631-559-9269 1-516-512-3133

 Email: info@creative-biomart.com  Fax: 1-631-938-8127

 45-1 Ramsey Road, Shirley, NY 11967, USA

Bio-activity	Binding of 2019-nCoV RBD-N Protein Chimera to immobilized 2019-nCoV N-protein hIgG antibody determined by ELISA using HRP-conjugated Anti 2019-nCoV Spike Protein hIgG antibody as the detection antibody.
Molecular Mass	122 kDa
Purity	>70 %
Stability	One year at -70 centigrade from date of shipment.
Storage	Store product at -70 centigrade. For optimal storage, aliquot targets into smaller quantities after centrifugation and store at the recommended temperature. For most favorable performance, avoid repeated handling and multiple freeze/thaw cycles.
Concentration	0.2 µg/µL
Storage Buffer	Recombinant protein stored in 1X PBS, pH 7.4
GENE INFORMATION	
Gene Name	S surface glycoprotein [Severe acute respiratory syndrome coronavirus 2]
Official Symbol	S
Synonyms	S; surface glycoprotein; spike glycoprotein; surface glycoprotein; structural protein; spike protein
Gene ID	43740568
mRNA Refseq	MN908947

 Tel: 1-631-559-9269 1-516-512-3133

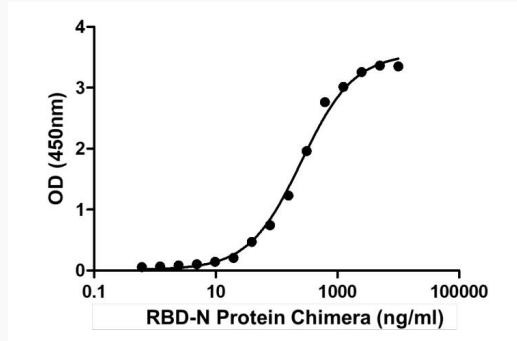
 Email: info@creative-biomart.com  Fax: 1-631-938-8127

 45-1 Ramsey Road, Shirley, NY 11967, USA

Protein Refseq

YP_009724390

Activity



Binding of 2019-nCoV RBD-N Protein Chimera to immobilized 2019-nCoV N-protein hIgG antibody determined by ELISA using HRP-conjugated Anti 2019-nCoV Spike Protein hIgG antibody as the detection antibody.

 Tel: 1-631-559-9269 1-516-512-3133

 Email: info@creative-biomart.com  Fax: 1-631-938-8127

 45-1 Ramsey Road, Shirley, NY 11967, USA