

Recombinant SARS-CoV-2 Omicron B.1.1.529 variant spike RBD protein, C-His-tagged

Cat. No. S-652S **Lot. No.** (See product label)

SPECIFICATION

Product Overview	Recombinant SARS-CoV-2 Omicron variant spike S1 subunit protein RBD with 15 mutant sites (G339D, S371L, S373P, S375F, K417N, N440K, G446S, S477N, T478K, E484A, Q493R, G496S, Q498R, N501Y, Y505H) with C-terminal His-tag, derived from the transfected human HEK293 cells.
Species	SARS-CoV-2
Source	HEK293
ProteinLength	Arg319-Phe541. Omicron 15 mutant sites (G339D, S371L, S373P, S375F, K417N, N440K, G446S, S477N, T478K, E484A, Q493R, G496S, Q498R, N501Y, Y505H)
Description	Severe acute respiratory syndrome coronavirus 2 (SARS-CoV-2) is an enveloped, positive-sense, single-stranded RNA virus that causes coronavirus disease 2019 (COVID-19). Virus particles include the RNA genetic material and structural proteins needed for invasion of host cells. Once inside the cell the infecting RNA is used to encode structural proteins that make up virus particles, nonstructural proteins that direct virus assembly, transcription, replication and host control and accessory proteins whose function has not been determined.~ The structural proteins of SARS-CoV-2 include the envelope protein (E), spike or surface glycoprotein (S), membrane protein (M) and the nucleocapsid protein (N). The spike glycoprotein is found on the outside of the virus particle and gives coronavirus viruses their crown-like appearance. This glycoprotein mediates attachment of the virus particle and entry into

 Tel: 1-631-559-9269 1-516-512-3133

 Email: info@creative-biomart.com  Fax: 1-631-938-8127

 45-1 Ramsey Road, Shirley, NY 11967, USA

	the host cell. S protein is an important target for vaccine development, antibody therapies and diagnostic antigen-based tests.
Form	Liquid
Molecular Mass	Recombinant protein product has a calculated molecular mass of ~25 kDa. Due to the abundant glycosylation, it migrates as approximately ~30 kDa protein bands in SDS-PAGE under DTT, beta-mercaptoethanol reducing conditions. After deglycosylation under native and denature conditions, the protein presented as one reduced ~25 kDa band.
Endotoxin	< 0.5 EU/μg of the protein as determined by the LAL method
Purity	> 90%, SDS-PAGE under reducing conditions and visualized by Coomassie blue staining
Applications	Functional Assay, Protein-protein Interaction, Post-translational Modifications, ELISA, EIA, Western Blotting, Dot Blotting, Immunoprecipitation, Protein Array, etc.
Notes	This product is furnished for LABORATORY RESEARCH USE ONLY. Not for diagnostic or therapeutic use.
Storage	Upon arrival, the protein may be stored for 2 weeks at 4 centigrade. For long term storage, it is recommended to store at -20 centigrade or -80 centigrade in appropriate aliquots. Avoid repeated freeze-thaw cycles.
Storage Buffer	Supplied as a 0.2 um filtered solution in PBS (pH 7.4)
Shipping	Ice packs

 Tel: 1-631-559-9269 1-516-512-3133

 Email: info@creative-biomart.com  Fax: 1-631-938-8127

 45-1 Ramsey Road, Shirley, NY 11967, USA

GENE INFORMATION

Gene Name S surface glycoprotein [Severe acute respiratory syndrome coronavirus 2]

Official Symbol S

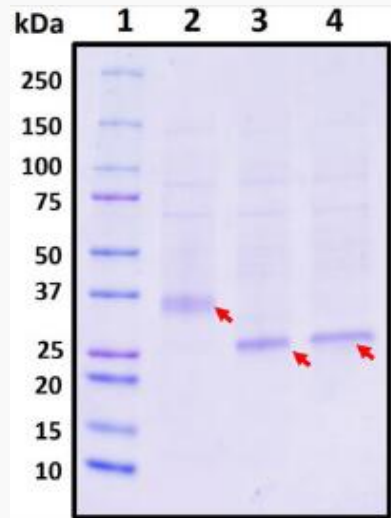
Synonyms S; surface glycoprotein; structural protein; spike protein


Gene ID 43740568

Protein Refseq YP_009724390

UniProt ID P0DTC2

SDS-PAGE



 Tel: 1-631-559-9269 1-516-512-3133

 Email: info@creative-biomart.com  Fax: 1-631-938-8127

 45-1 Ramsey Road, Shirley, NY 11967, USA