

Recombinant Human S100A1 Protein, Myc/DDK-tagged, C13 and N15-labeled

Cat. No. S100A1-1909H **Lot. No.** (See product label)

SPECIFICATION

Product Overview	S100A1 MS Standard C13 and N15-labeled recombinant protein (NP_006262) with a C-terminal MYC/DDK tag, was expressed in HEK293 cells.
Species	Human
Source	HEK293
Description	The protein encoded by this gene is a member of the S100 family of proteins containing 2 EF-hand calcium-binding motifs. S100 proteins are localized in the cytoplasm and/or nucleus of a wide range of cells, and involved in the regulation of a number of cellular processes such as cell cycle progression and differentiation. S100 genes include at least 13 members which are located as a cluster on chromosome 1q21. This protein may function in stimulation of Ca ²⁺ -induced Ca ²⁺ release, inhibition of microtubule assembly, and inhibition of protein kinase C-mediated phosphorylation. Reduced expression of this protein has been implicated in cardiomyopathies.
Molecular Mass	10.5 kDa
AA Sequence	MGSELETAMETLINVFHAHSGKEGDKYKLSKKEKELLQTELSGFLDAQKDVDAVDK VMKELDENGDGEVDFQEYVVLVAALTVACNFFWENSTRTRPLEQKLISEEDLAAN DILDYKDDDDKV
Purity	> 80% as determined by SDS-PAGE and Coomassie blue staining

 Tel: 1-631-559-9269 1-516-512-3133

 Email: info@creative-biomart.com  Fax: 1-631-938-8127

 45-1 Ramsey Road, Shirley, NY 11967, USA

Stability	Stable for 3 months from receipt of products under proper storage and handling conditions.
Storage	Store at -80 centigrade. Avoid repeated freeze-thaw cycles.
Concentration	50 µg/mL as determined by BCA
Storage Buffer	100 mM glycine, 25 mM Tris-HCl, pH 7.3.
GENE INFORMATION	
Gene Name	S100A1 S100 calcium binding protein A1 [Homo sapiens (human)]
Official Symbol	S100A1
Synonyms	S100A1; S100 calcium binding protein A1; S100 calcium binding protein A1, S100A; protein S100-A1; S100 alpha; S-100 protein alpha chain; S-100 protein subunit alpha; S100 calcium-binding protein A1; S100 protein, alpha polypeptide; S100; S100A; S100-alpha;
Gene ID	6271
mRNA Refseq	NM_006271
Protein Refseq	NP_006262
MIM	176940
UniProt ID	P23297

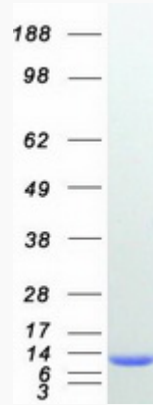
 Tel: 1-631-559-9269 1-516-512-3133

 Email: info@creative-biomart.com  Fax: 1-631-938-8127

 45-1 Ramsey Road, Shirley, NY 11967, USA



SDS-PAGE



Tel: 1-631-559-9269 1-516-512-3133

Email: info@creative-biomart.com Fax: 1-631-938-8127

45-1 Ramsey Road, Shirley, NY 11967, USA