

Recombinant Human S100A1 protein, His-tagged

Cat. No. S100A1-318H Lot. No. (See product label)

SPECIFICATION

Product Overview	Recombinant Human S100A1 protein (Met1-Ser94), fused to His tag at C-terminus, was expressed in E.coli.
Species	Human
Source	E.coli
ProteinLength	94
Description	<p>Protein S100-A1/S100A1 is a Ca²⁺-binding protein of the EF-hand type that belongs to the S100 protein family. S100 proteins consisting of at least 19 members exist as dimers in the cytoplasm and/or nucleus of a wide range of cells, and are involved in the regulation of a number of cellular processes such as cell-cycle progression and cell differentiation. S100-A1 can weakly bind calcium but bind zinc very tightly-distinct binding sites with different affinities exist for both ions on each monomer.</p> <p>Physiological concentrations of potassium ion antagonize the binding of both divalent cations, especially affecting high-affinity calcium-binding sites.</p>
Form	Lyophilized from 0.22 um filtered solution in 50 mM Tris, 150 mM NaCl, pH 8.0, 10% trehalose.
Molecular Mass	The protein has a calculated MW of 11.4 kDa. The protein migrates as 11 kDa under reducing (R) condition (SDS-PAGE).
Endotoxin	Less than 1.0 EU per ug by the LAL method.

 Tel: 1-631-559-9269 1-516-512-3133

 Email: info@creative-biomart.com  Fax: 1-631-938-8127

 45-1 Ramsey Road, Shirley, NY 11967, USA

Purity	>95% as determined by SDS-PAGE.
Storage	<p>For long term storage, the product should be stored at lyophilized state at -20 centigrade or lower.</p> <p>Please avoid repeated freeze-thaw cycles.</p> <p>This product is stable after storage at:</p> <p>-20 centigrade to -70 centigrade for 12 months in lyophilized state; -70 centigrade for 3 months under sterile conditions after reconstitution.</p>
Reconstitution	It is recommended that sterile water be added to the vial to prepare a stock solution of 0.2 ug/ul. Centrifuge the vial at 4°C before opening to recover the entire contents.
GENE INFORMATION	
Gene Name	S100A1
Official Symbol	S100A1
Synonyms	S100A1; S100 calcium binding protein A1; S100 calcium binding protein A1 , S100A; protein S100-A1; S100 alpha; S-100 protein alpha chain; S-100 protein subunit alpha; S100 calcium-binding protein A1; S100 protein, alpha polypeptide; S100; S100A; S100-alpha
Gene ID	6271
mRNA Refseq	NM_006271
Protein Refseq	NP_006262
MIM	176940

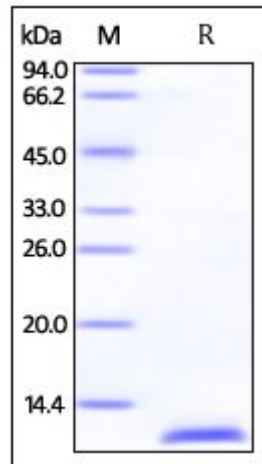
 Tel: 1-631-559-9269 1-516-512-3133

 Email: info@creative-biomart.com  Fax: 1-631-938-8127

 45-1 Ramsey Road, Shirley, NY 11967, USA

UniProt ID

P23297

**SDS-PAGE of
S100A1-318H**

Human S100A1, His Tag on SDS-PAGE under reducing (R) condition. The gel was stained overnight with Coomassie Blue. The purity of the protein is greater than 95%.

 Tel: 1-631-559-9269 1-516-512-3133 Email: info@creative-biomart.com  Fax: 1-631-938-8127 45-1 Ramsey Road, Shirley, NY 11967, USA