

Recombinant Human S100A1 protein, His & S-tagged

Cat. No. S100A1-555H Lot. No. (See product label)

SPECIFICATION

Product Overview Recombinant Human S100A1 (P23297) aa. (Met1~Ser94) fused with N-terminal His & S tag was produced in E. coli cells.

Species Human

Source E.coli

ProteinLength Met1~Ser94

Description The protein encoded by this gene is a member of the S100 family of proteins containing 2 EF-hand calcium-binding motifs. S100 proteins are localized in the cytoplasm and/or nucleus of a wide range of cells, and involved in the regulation of a number of cellular processes such as cell cycle progression and differentiation. S100 genes include at least 13 members which are located as a cluster on chromosome 1q21. This protein may function in stimulation of Ca²⁺-induced Ca²⁺ release, inhibition of microtubule assembly, and inhibition of protein kinase C-mediated phosphorylation. Reduced expression of this protein has been implicated in cardiomyopathies.

Form Freeze-dried powder

Molecular Mass Predicted Molecular Mass: 16.3 kDa

Endotoxin <1.0EU per 1g (determined by the LAL method)

 Tel: 1-631-559-9269 1-516-512-3133

 Email: info@creative-biomart.com  Fax: 1-631-938-8127

 45-1 Ramsey Road, Shirley, NY 11967, USA

Purity	> 95%
Characteristic	The isoelectric point is 4.8.
Applications	SDS-PAGE; WB; ELISA; IP.
Stability	The thermal stability is described by the loss rate. The loss rate was determined by accelerated thermal degradation test, that is, incubate the protein at 37°C for 48h, and no obvious degradation and precipitation were observed. The loss rate is less than 5% within the expiration date under appropriate storage condition.
Storage	Avoid repeated freeze/thaw cycles. Store at 2-8°C for one month. Aliquot and store at -80°C for 12 months.
Storage buffer	PBS, pH7.4, containing 5% sucrose, 0.01% sarcosyl.
Reconstitution	Reconstitute in sterile PBS, pH7.2-pH7.4
GENE INFORMATION	
Gene Name	S100A1 S100 calcium binding protein A1 [Homo sapiens (human)]
Official Symbol	S100A1
Synonyms	S100A1; S100; S100A; S100-alpha; S100 calcium binding protein A1; protein S100-A1; S-100 protein alpha chain; S-100 protein subunit alpha; S100 alpha; S100 protein, alpha polypeptide
Gene ID	6271
mRNA Refseq	NM_006271.1

 Tel: 1-631-559-9269 1-516-512-3133

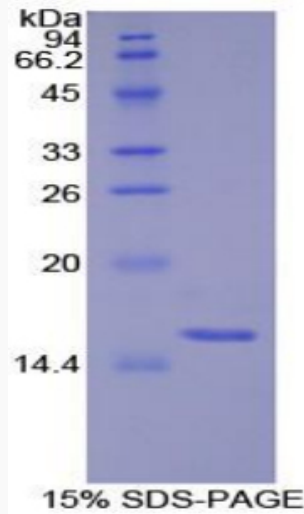
 Email: info@creative-biomart.com  Fax: 1-631-938-8127

 45-1 Ramsey Road, Shirley, NY 11967, USA

Protein Refseq NP_006262.1

UniProt ID P23297

SDS-PAGE



 Tel: 1-631-559-9269 1-516-512-3133

 Email: info@creative-biomart.com  Fax: 1-631-938-8127

 45-1 Ramsey Road, Shirley, NY 11967, USA