

Active Recombinant Human S100A1 protein, hFc-tagged

Cat. No. S100A1-841H Lot. No. (See product label)

SPECIFICATION

Product Overview	Active Recombinant Human S100A1 protein(NP_006262.1) (Gly 2-Ser94) was expressed in HEK293 with the N-terminal fused Fc region of human IgG1.
Species	Human
Source	HEK293
ProteinLength	2-94 aa
Form	Lyophilized from sterile 100mM Glycine, 10mM NaCl, 50mM Tris, pH 7.5.
Bio-activity	Measured by its ability to bind biotinylated Human Fc-S100B in functional Elisa.
Molecular Mass	The recombinant human Fc/S100A1 is a disulfide-linked homodimeric protein. The reduced monomer consists of 330 amino acids and has a predicted molecular mass of 37.1 kDa. As a result of glycosylation, the apparent molecular mass of rhFc/S100A1 monomer is approximately 40 kDa in SDS-PAGE under reducing conditions.
Endotoxin	< 1.0 EU per µg of the protein as determined by the LAL method.
Purity	> 95 % as determined by SDS-PAGE
Storage	Store it under sterile conditions at -20°C to -80°C upon receiving. Recommend to aliquot the protein into smaller quantities for optimal storage. Avoid repeated freeze-

 Tel: 1-631-559-9269 1-516-512-3133

 Email: info@creative-biomart.com  Fax: 1-631-938-8127

 45-1 Ramsey Road, Shirley, NY 11967, USA

thaw cycles.

Reconstitution

It is recommended that sterile water be added to the vial to prepare a stock solution of 0.2 ug/ul. Centrifuge the vial at 4°C before opening to recover the entire contents.

GENE INFORMATION

Gene Name [S100A1 S100 calcium binding protein A1 \[Homo sapiens \]](#)

Official Symbol [S100A1](#)

Synonyms S100A1; S100 calcium binding protein A1; S100 calcium binding protein A1 , S100A; protein S100-A1; S100 alpha; S-100 protein alpha chain; S-100 protein subunit alpha; S100 calcium-binding protein A1; S100 protein, alpha polypeptide; S100; S100A; S100-alpha;

Gene ID [6271](#)

mRNA Refseq [NM_006271](#)

Protein Refseq [NP_006262](#)

MIM [176940](#)

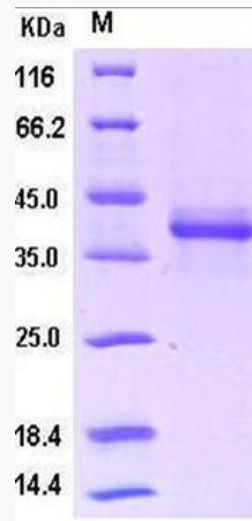
UniProt ID [P23297](#)

 Tel: 1-631-559-9269 1-516-512-3133

 Email: info@creative-biomart.com  Fax: 1-631-938-8127

 45-1 Ramsey Road, Shirley, NY 11967, USA

SDS-PAGE



 Tel: 1-631-559-9269 1-516-512-3133

 Email: info@creative-biomart.com  Fax: 1-631-938-8127

 45-1 Ramsey Road, Shirley, NY 11967, USA