

## Recombinant Human S100A10 protein, His-tagged

Cat. No. S100A10-1255H Lot. No. (See product label)

### SPECIFICATION

<b>Product Overview</b>	Recombinant Human S100A10 protein(P60903)(112aa), fused with N-terminal His tag, was expressed in E. coli.
<b>Species</b>	Human
<b>Source</b>	E.coli
<b>Protein Length</b>	112aa(including fusion tag)
<b>Tag</b>	N-His
<b>Form</b>	20mM Tris.Cl, 50mM NaCl, 2.5% Glycerol, pH8.0.
<b>Molecular Mass</b>	13.1kDa(including fusion tag)
<b>Storage</b>	Store at -80°C and avoid repeated freeze-thaw cycles.
<b>Reconstitution</b>	It is recommended that sterile water be added to the vial to prepare a stock solution of 0.2 ug/ul. Centrifuge the vial at 4°C before opening to recover the entire contents.

### GENE INFORMATION

<b>Gene Name</b>	S100A10 S100 calcium binding protein A10 [ Homo sapiens ]
<b>Official Symbol</b>	S100A10

 Tel: 1-631-559-9269 1-516-512-3133

 Email: [info@creative-biomart.com](mailto:info@creative-biomart.com)  Fax: 1-631-938-8127

 45-1 Ramsey Road, Shirley, NY 11967, USA

**Synonyms**

S100A10; S100 calcium binding protein A10; ANX2LG, CAL1L, S100 calcium binding protein A10 (annexin II ligand, calpactin I, light polypeptide (p11)) , S100 calcium binding protein A10 (annexin II ligand, calpactin I, light polypeptide (p11)); protein S100-A10; 42C; annexin II tetramer (Allt) p11 subunit; CLP11; P11; calpactin I light chain; calpactin-1 light chain; cellular ligand of annexin II; annexin II ligand, calpactin I, light polypeptide; S100 calcium binding protein A10 (annexin II ligand, calpactin I, light polypeptide (p11)); S100 calcium-binding protein A10 (annexin II ligand, calpactin I, light polypeptide (p11)); p10; GP11; ANX2L; CAL1L; Ca[1]; ANX2LG; MGC111133;

**Gene ID**

[6281](#)

**mRNA Refseq**

[NM\\_002966](#)

**Protein Refseq**

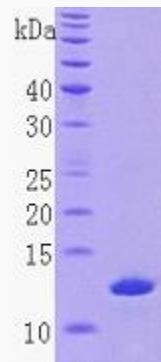
[NP\\_002957](#)

**MIM**

[114085](#)

**UniProt ID**

[P60903](#)

**SDS-PAGE**


 Tel: 1-631-559-9269 1-516-512-3133

 Email: [info@creative-biomart.com](mailto:info@creative-biomart.com)  Fax: 1-631-938-8127

 45-1 Ramsey Road, Shirley, NY 11967, USA