

Recombinant Bovine S100A10 Protein, His-tagged

Cat. No. S100A10-163B Lot. No. (See product label)

SPECIFICATION

Product Overview	Recombinant Bovine S100A10(Met1~Lys97) fused with His tag at N-terminal was expressed in E. coli.
Species	Bovine
Source	E.coli
ProteinLength	Met1~Lys97
Form	PBS, pH7.4, containing 0.01% SKL, 1mM DTT, 5% Trehalose and Proclin300.
Molecular Mass	12.7kDa
Endotoxin	<1.0EU per 1ug (determined by the LAL method)
Purity	> 95%
Applications	Positive Control; Immunogen; SDS-PAGE; WB. If bio-activity of the protein is needed, please check active protein
Stability	The thermal stability is described by the loss rate. The loss rate was determined by accelerated thermal degradation test, that is, incubate the protein at 37 centigrade for 48h, and no obvious degradation and precipitation were observed. The loss rate is less than 5% within the expiration date under appropriate storage condition.

 Tel: 1-631-559-9269 1-516-512-3133

 Email: info@creative-biomart.com  Fax: 1-631-938-8127

 45-1 Ramsey Road, Shirley, NY 11967, USA

Storage	Avoid repeated freeze/thaw cycles. Store at 2-8 centigrade for one month. Aliquot and store at -80 centigrade for 12 months.
----------------	--

Reconstitution	Reconstitute in PBS or others
-----------------------	-------------------------------

GENE INFORMATION

Gene Name	S100A10 S100 calcium binding protein A10 [Bos taurus]
------------------	---

Official Symbol	S100A10
------------------------	---------

Synonyms	p11; calpactin I light chain; calpactin-1 light chain; cellular ligand of annexin II; p10 protein
-----------------	---

Gene ID	498206
----------------	--------

mRNA Refseq	NM_174650
--------------------	-----------

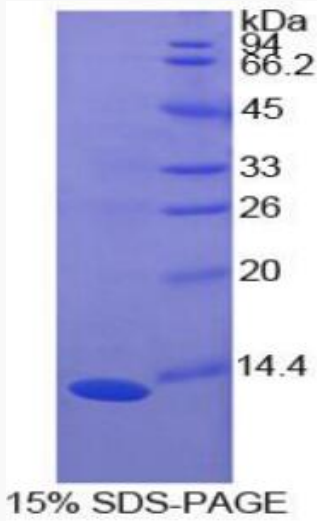
Protein Refseq	NP_777075
-----------------------	-----------

UniProt ID	P60902
-------------------	--------

 Tel: 1-631-559-9269 1-516-512-3133

 Email: info@creative-biomart.com  Fax: 1-631-938-8127

 45-1 Ramsey Road, Shirley, NY 11967, USA



Tel: 1-631-559-9269 1-516-512-3133

Email: info@creative-biomart.com Fax: 1-631-938-8127

45-1 Ramsey Road, Shirley, NY 11967, USA