

Recombinant Human S100A10 protein, His-tagged

Cat. No. S100A10-202H **Lot. No.** (See product label)

SPECIFICATION

Product Overview Recombinant Human S100A10 (Met1-Lys97) protein was fused to His-tag at C-terminus and expressed in E.coli.

Species Human

Source E.coli

ProteinLength Met1-Lys97

Description

S100 calcium-binding protein A10 (S100A10), a member of the S100 family of proteins containing two EF-hand calcium-binding motifs, is also known as protein S100-A10, calpactin I light chain, cellular ligand of annexin II, p10 protein and p11, which can be found as a free monomer, a homodimer, or a heterotetramer composed of a p11 dimer complex with two molecules of annexin II. S100A10 is an integral part of cellular structural scaffolding that interacts with plasma membrane proteins through its association with annexin II. S100A10 also works together with cytosolic and peripheral membrane-associated proteins such as AHNAK in the development of the intracellular membrane. Furthermore, S100A10 has been implicated in the transportation of proteins involved in mood regulation, nociception, and cell polarization. Complexed with the annexin II, S100A10 binds receptor and channel proteins and guides them to the cell surface, resulting in increased membrane localization and consequent magnified functional expression of these proteins.

Predicted N Terminal Met1

 Tel: 1-631-559-9269 1-516-512-3133

 Email: info@creative-biomart.com  Fax: 1-631-938-8127

 45-1 Ramsey Road, Shirley, NY 11967, USA

Form	Lyophilized from 0.22 µm filtered solution in 50 mM Tris, 150 mM NaCl, pH 8.0, 10% trehalose.
Molecular Mass	The protein has a calculated MW of 12 kDa. The protein migrates as 12 kDa under reducing (R) condition (SDS-PAGE).
Endotoxin	Less than 1.0 EU per µg by the LAL method.
Purity	>95% as determined by SDS-PAGE.
Storage	<p>For long term storage, the product should be stored at lyophilized state at -20 centigrade or lower.</p> <p>Please avoid repeated freeze-thaw cycles.</p> <p>This product is stable after storage at:</p> <p>-20 to -70 centigrade for 12 months in lyophilized state;</p> <p>-70 centigrade for 3 months under sterile conditions after reconstitution.</p>
Reconstitution	It is recommended that sterile water be added to the vial to prepare a stock solution of 0.2 ug/ul. Centrifuge the vial at 4°C before opening to recover the entire contents.

GENE INFORMATION

Gene Name	S100A10
Official Symbol	S100A10
Synonyms	S100A10; S100 calcium binding protein A10; ANX2LG, CAL1L, S100 calcium binding protein A10 (annexin II ligand, calpactin I, light polypeptide (p11)) , S100 calcium binding protein A10 (annexin II ligand, calpactin I, light polypeptide (p11)); protein S100-A10; 42C; annexin II tetramer (Allt) p11 subunit; CLP11; P11; calpactin I light chain; calpactin-1 light chain; cellular ligand of annexin II; annexin II ligand, calpactin

 Tel: 1-631-559-9269 1-516-512-3133

 Email: info@creative-biomart.com  Fax: 1-631-938-8127

 45-1 Ramsey Road, Shirley, NY 11967, USA

I, light polypeptide; S100 calcium binding protein A10 (annexin II ligand, calpactin I, light polypeptide (p11)); S100 calcium-binding protein A10 (annexin II ligand, calpactin I, light polypeptide (p11)); p10; GP11; ANX2L; CAL1L; Ca[1]; ANX2LG; MGC111133

Gene ID [6281](#)

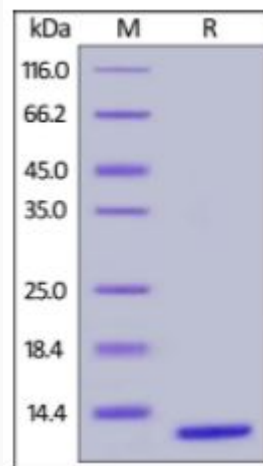
mRNA Refseq [NM_002966](#)

Protein Refseq [NP_002957](#)

MIM [114085](#)

UniProt ID [P60903](#)

**SDS-PAGE of
S100A10-202H**



Human S100A10, His Tag on SDS-PAGE under reducing (R) condition. The gel was stained overnight with Coomassie Blue. The purity of the protein is greater than 95%.

 Tel: 1-631-559-9269 1-516-512-3133

 Email: info@creative-biomart.com  Fax: 1-631-938-8127

 45-1 Ramsey Road, Shirley, NY 11967, USA