

Recombinant Human S100A10 protein, His-tagged

Cat. No. S100A10-3878H **Lot. No.** (See product label)

SPECIFICATION

Product Overview	Recombinant Human S100A10 protein(NP_002957.1) (Pro 2-Lys 97) was expressed in E. coli, with a polyhistidine tag at the N-terminus.
Species	Human
Source	E. coli
ProteinLength	2-97 aa
Form	Lyophilized from sterile 20mM Tris, pH 8.5, 10% glycerol.
Molecular Mass	The recombinant human S100A10 consisting of 107 amino acids and migrates as an approximately 12.6 kDa band in SDS-PAGE under reducing conditions as predicted.
Purity	> 95 % as determined by SDS-PAGE
Storage	Store it under sterile conditions at -20°C to -80°C upon receiving. Recommend to aliquot the protein into smaller quantities for optimal storage. Avoid repeated freeze-thaw cycles.
Reconstitution	It is recommended that sterile water be added to the vial to prepare a stock solution of 0.2 ug/ul. Centrifuge the vial at 4°C before opening to recover the entire contents.
protein Refseq-Weblink	http://www.ncbi.nlm.nih.gov/protein/NP_002957.1

 Tel: 1-631-559-9269 1-516-512-3133

 Email: info@creative-biomart.com  Fax: 1-631-938-8127

 45-1 Ramsey Road, Shirley, NY 11967, USA

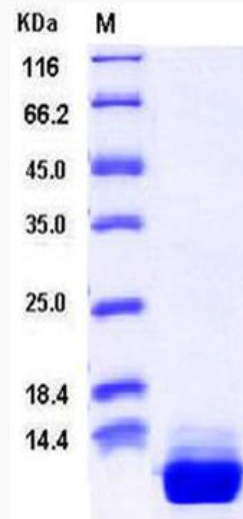
Unit ID	P60903
Unit ID-Weblink	https://www.uniprot.org/uniprotkb/P60903
GENE INFORMATION	
Gene Name	S100A10 S100 calcium binding protein A10 [Homo sapiens]
Official Symbol	S100A10
Synonyms	S100A10; S100 calcium binding protein A10; ANX2LG, CAL1L, S100 calcium binding protein A10 (annexin II ligand, calpactin I, light polypeptide (p11)), S100 calcium binding protein A10 (annexin II ligand, calpactin I, light polypeptide (p11)); protein S100-A10; 42C; annexin II tetramer (Allt) p11 subunit; CLP11; P11; calpactin I light chain; calpactin-1 light chain; cellular ligand of annexin II; annexin II ligand, calpactin I, light polypeptide; S100 calcium binding protein A10 (annexin II ligand, calpactin I, light polypeptide (p11)); S100 calcium-binding protein A10 (annexin II ligand, calpactin I, light polypeptide (p11)); p10; GP11; ANX2L; CAL1L; Ca[1]; ANX2LG; MGC111133;
Gene ID	6281
mRNA Refseq	NM_002966
protein Refseq	NP_002957
MIM	114085

 Tel: 1-631-559-9269 1-516-512-3133

 Email: info@creative-biomart.com  Fax: 1-631-938-8127

 45-1 Ramsey Road, Shirley, NY 11967, USA

SDS-PAGE



 Tel: 1-631-559-9269 1-516-512-3133

 Email: info@creative-biomart.com  Fax: 1-631-938-8127

 45-1 Ramsey Road, Shirley, NY 11967, USA