

## Recombinant Human S100A10 Protein (Met1-Lys96), N-His tagged

Cat. No. S100A10-6223H Lot. No. (See product label)

### SPECIFICATION

<b>Product Overview</b>	Recombinant human S100A10 (Met1-Lys96) fused with the N-His tag was expressed in E. coli.
<b>Species</b>	Human
<b>Source</b>	E.coli
<b>ProteinLength</b>	Met1-Lys96
<b>Form</b>	Lyophilized powder/frozen liquid
<b>Molecular Mass</b>	13.38 kDa
<b>Purity</b>	> 90 % as determined by SDS-PAGE
<b>Notes</b>	For research use only.
<b>Storage</b>	Use a manual defrost freezer and avoid repeated freeze thaw cycles. Store at 2 to 8 centigrade for one week. Store at -20 to -80 centigrade for twelve months from the date of receipt.
<b>Storage Buffer</b>	0.01M PBS, pH 7.4, 0.02 % NLS
<b>Reconstitution</b>	Reconstitute in sterile water for a stock solution.

 Tel: 1-631-559-9269 1-516-512-3133

 Email: [info@creative-biomart.com](mailto:info@creative-biomart.com)  Fax: 1-631-938-8127

 45-1 Ramsey Road, Shirley, NY 11967, USA

**Shipping** They are shipped out with dry ice/blue ice unless customers require otherwise.

## GENE INFORMATION

**Gene Name** [S100A10 S100 calcium binding protein A10 \[ Homo sapiens \(human\) \]](#)

**Official Symbol** [S100A10](#)

**Synonyms** S100A10; S100 calcium binding protein A10; ANX2LG, CAL1L, S100 calcium binding protein A10 (annexin II ligand, calpactin I, light polypeptide (p11)), S100 calcium binding protein A10 (annexin II ligand, calpactin I, light polypeptide (p11)); protein S100-A10; 42C; annexin II tetramer (Allt) p11 subunit; CLP11; P11; calpactin I light chain; calpactin-1 light chain; cellular ligand of annexin II; annexin II ligand, calpactin I, light polypeptide; S100 calcium binding protein A10 (annexin II ligand, calpactin I, light polypeptide (p11)); S100 calcium-binding protein A10 (annexin II ligand, calpactin I, light polypeptide (p11)); p10; GP11; ANX2L; CAL1L; Ca[1]; ANX2LG; MGC111133;

**Gene ID** [6281](#)

**mRNA Refseq** [NM\\_002966](#)

**Protein Refseq** [NP\\_002957](#)

**MIM** [114085](#)

**UniProt ID** [P60903](#)

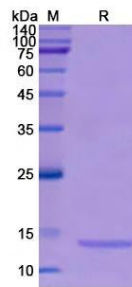
 Tel: 1-631-559-9269 1-516-512-3133

 Email: [info@creative-biomart.com](mailto:info@creative-biomart.com)  Fax: 1-631-938-8127

 45-1 Ramsey Road, Shirley, NY 11967, USA



SDS-PAGE



Tel: 1-631-559-9269 1-516-512-3133

Email: [info@creative-biomart.com](mailto:info@creative-biomart.com) Fax: 1-631-938-8127

45-1 Ramsey Road, Shirley, NY 11967, USA