

Recombinant Chicken S100A11 protein, His & GST-tagged

Cat. No. S100A11-2580C Lot. No. (See product label)

SPECIFICATION

Product Overview	Recombinant Chicken S100A11 aa. (Met1~Pro101 (Accession # P24479)) fused with N-terminal His & GST tag was produced in E. coli cells.
Species	Chicken
Source	E.coli
ProteinLength	Met1~Pro101
Form	Freeze-dried powder
Molecular Mass	Predicted Molecular Mass: 43.5kDa
Endotoxin	<1.0EU per 1g (determined by the LAL method)
Purity	>95%
Characteristic	The isoelectric point is 6.4.
Applications	SDS-PAGE; WB; ELISA; IP
Stability	The thermal stability is described by the loss rate. The loss rate was determined by accelerated thermal degradation test, that is, incubate the protein at 37°C for 48h, and no obvious degradation and precipitation were observed. The loss rate is less than 5% within the expiration date under appropriate storage condition.

 Tel: 1-631-559-9269 1-516-512-3133

 Email: info@creative-biomart.com  Fax: 1-631-938-8127

 45-1 Ramsey Road, Shirley, NY 11967, USA

Storage	Avoid repeated freeze/thaw cycles. Store at 2-8°C for one month. Aliquot and store at -80°C for 12 months.
Storage buffer	Supplied as lyophilized form in PBS, pH7.4, containing 5% trehalose, 0.01% sarcosyl.
Reconstitution	Reconstitute in sterile PBS, pH7.2-pH7.4

GENE INFORMATION

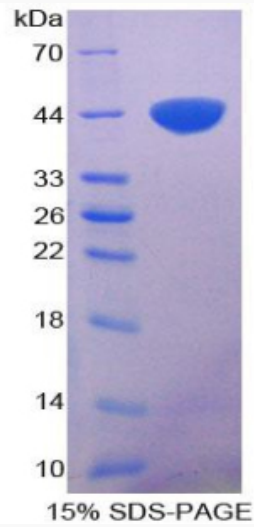
Gene Name	S100A11 S100 calcium binding protein A11 [Gallus gallus (chicken)]
Official Symbol	S100A11
Synonyms	S100A11; S100 calcium binding protein A11; protein S100-A11; calgizzarin
Gene ID	396075
mRNA Refseq	NM_205166.2
Protein Refseq	NP_990497.1
UniProt ID	P24479

 Tel: 1-631-559-9269 1-516-512-3133

 Email: info@creative-biomart.com  Fax: 1-631-938-8127

 45-1 Ramsey Road, Shirley, NY 11967, USA

SDS-PAGE



 Tel: 1-631-559-9269 1-516-512-3133

 Email: info@creative-biomart.com  Fax: 1-631-938-8127

 45-1 Ramsey Road, Shirley, NY 11967, USA