

Recombinant Human S100A11 protein

Cat. No. S100A11-3102H **Lot. No.** (See product label)

SPECIFICATION

Product Overview	Recombinant Human S100A11 protein(NP_005611.1) (Met 1-Thr 105) was expressed in E. coli.
Species	Human
Source	E. coli
ProteinLength	1-105 aa
Form	Lyophilized from sterile PBS, pH 7.4.
Molecular Mass	The recombinant human S100A11 consisting of 105 amino acids and migrates with an apparent molecular mass of 24 & 12 kDa corresponding to dimeric and monomeric form as estimated in SDS-PAGE under non-reduced condition.
Purity	> 97 % as determined by SDS-PAGE
Storage	Store it under sterile conditions at -20°C to -80°C upon receiving. Recommend to aliquot the protein into smaller quantities for optimal storage. Avoid repeated freeze-thaw cycles.
Reconstitution	It is recommended that sterile water be added to the vial to prepare a stock solution of 0.2 ug/ul. Centrifuge the vial at 4°C before opening to recover the entire contents.
protein Refseq-	http://www.ncbi.nlm.nih.gov/protein/NP_005611.1

 Tel: 1-631-559-9269 1-516-512-3133

 Email: info@creative-biomart.com  Fax: 1-631-938-8127

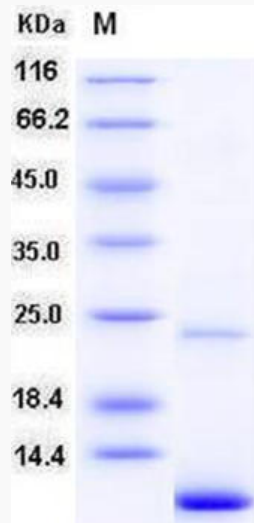
 45-1 Ramsey Road, Shirley, NY 11967, USA

Weblink**Unit ID** P31949**Unit ID-Weblink** <https://www.uniprot.org/uniprotkb/P31949>**GENE INFORMATION****Gene Name** S100A11 S100 calcium binding protein A11 [Homo sapiens]**Official Symbol** S100A11**Synonyms**

S100A11; S100 calcium binding protein A11; S100 calcium binding protein A11 (calgizzarin), S100 calcium binding protein A11 (calgizzarin); protein S100-A11; S100C; MLN 70; calgizzarin; protein S100-C; metastatic lymph node gene 70 protein; S100 calcium-binding protein A11 (calgizzarin); MLN70;

Gene ID 6282**mRNA Refseq** NM_005620**protein Refseq** NP_005611**MIM** 603114 Tel: 1-631-559-9269 1-516-512-3133 Email: info@creative-biomart.com  Fax: 1-631-938-8127 45-1 Ramsey Road, Shirley, NY 11967, USA

SDS-PAGE



 Tel: 1-631-559-9269 1-516-512-3133

 Email: info@creative-biomart.com  Fax: 1-631-938-8127

 45-1 Ramsey Road, Shirley, NY 11967, USA