

## Recombinant Cattle S100A12 protein, His-tagged

Cat. No. S100A12-1478C Lot. No. (See product label)

### SPECIFICATION

<b>Product Overview</b>	Recombinant Cattle S100A12 aa. (Thr2~Glu92) fused with N-terminal His tag was produced in E. coli cells.
<b>Species</b>	Cattle
<b>Source</b>	E.coli
<b>ProteinLength</b>	Thr2~Glu92
<b>Form</b>	Freeze-dried powder
<b>Molecular Mass</b>	14kDa as determined by SDS-PAGE reducing conditions.
<b>Endotoxin</b>	<1.0EU per 1g (determined by the LAL method).
<b>Purity</b>	>98%
<b>Characteristic</b>	The isoelectric point is 5.9.
<b>Applications</b>	SDS-PAGE; WB; ELISA; IP; CoIP; Purification; Amine Reactive Labeling.
<b>Stability</b>	The thermal stability is described by the loss rate. The loss rate was determined by accelerated thermal degradation test, that is, incubate the protein at 37°C for 48h, and no obvious degradation and precipitation were observed. The loss rate is less

 Tel: 1-631-559-9269 1-516-512-3133

 Email: [info@creative-biomart.com](mailto:info@creative-biomart.com)  Fax: 1-631-938-8127

 45-1 Ramsey Road, Shirley, NY 11967, USA

than 5% within the expiration date under appropriate storage condition.

**Storage**

Avoid repeated freeze/thaw cycles. Store at 2-8°C for one month. Aliquot and store at -80°C for 12 months.

**Concentration**

200g/mL

**Storage buffer**

20mM Tris, 150mM NaCl, pH8.0, containing 1mM EDTA, 1mM DTT, 0.01% sarcosyl, 5%Trehalose and Proclin300.

**Reconstitution**

Reconstitute in 20mM Tris, 150mM NaCl (pH8.0) to a concentration of 0.1-1.0mg/mL. Do not vortex.

## GENE INFORMATION

**Gene Name**

S100A12 S100 calcium binding protein A12 [ *Bos taurus* (cattle) ]

**Official Symbol**

S100A12

**Synonyms**

CAGC; CAAF1; CO-AG; EN-RAGE; RAGE-binding protein; calcium-binding protein in amniotic fluid 1; calgranulin-C; cornea-associated antigen; extracellular newly identified RAGE-binding protein; protein S100-A12

**Gene ID**

282467

**mRNA Refseq**

NM\_174651.3

**Protein Refseq**

NP\_777076.1

**UniProt ID**

P79105

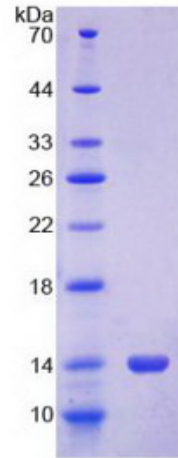
 Tel: 1-631-559-9269 1-516-512-3133

 Email: [info@creative-biomart.com](mailto:info@creative-biomart.com)  Fax: 1-631-938-8127

 45-1 Ramsey Road, Shirley, NY 11967, USA



**SDS-PAGE**



Tel: 1-631-559-9269 1-516-512-3133

Email: [info@creative-biomart.com](mailto:info@creative-biomart.com) Fax: 1-631-938-8127

45-1 Ramsey Road, Shirley, NY 11967, USA