

Active Recombinant Human S100A12 protein, His-tagged

Cat. No. S100A12-2563H Lot. No. (See product label)

SPECIFICATION

Product Overview	Active Recombinant Human S100-A12 Protein is produced by E. coli expression system. The target protein is expressed with sequence (Met1-Glu92) of human S100A12 (Accession #NP_005612.1) fused with a 6xHis tag at the C-terminus.
Species	Human
Source	E.coli
ProteinLength	Met1-Glu92
Form	Lyophilized from a 0.22 µm filtered solution of PBS, pH 7.4.
Bio-activity	Measured by its binding ability in a functional ELISA. Immobilized Human S100A12 at 2 µg/mL (100 µL/well) can bind recombinant Human AGER/RAGE with a linear range of 0.1-27.25 ng/mL.
Molecular Mass	10 kDa
Endotoxin	< 0.1 EU/µg of the protein by LAL method.
Purity	> 97% by SDS-PAGE.
Storage	Store the lyophilized protein at -20°C to -80 °C for long term. After reconstitution, the protein solution is stable at -20 °C for 3 months, at 2-8 °C for up to 1 week.

 Tel: 1-631-559-9269 1-516-512-3133

 Email: info@creative-biomart.com  Fax: 1-631-938-8127

 45-1 Ramsey Road, Shirley, NY 11967, USA

Reconstitution Reconstitute to a concentration of 0.1-0.5 mg/mL in sterile distilled water.

GENE INFORMATION

Gene Name S100A12 S100 calcium binding protein A12 [Homo sapiens]

Official Symbol S100A12

Synonyms S100A12; S100 calcium binding protein A12; S100 calcium binding protein A12 (calgranulin C) , S100 calcium binding protein A12 (calgranulin C); protein S100-A12; CAAF1; CAGC; CGRP; ENRAGE; MRP6; p6; EN-RAGE; calgranulin C; calgranulin-C; neutrophil S100 protein; calcium-binding protein in amniotic fluid 1; S100 calcium-binding protein A12 (calgranulin C); extracellular newly identified RAGE-binding protein;

Gene ID 6283

mRNA Refseq NM_005621

Protein Refseq NP_005612

MIM 603112

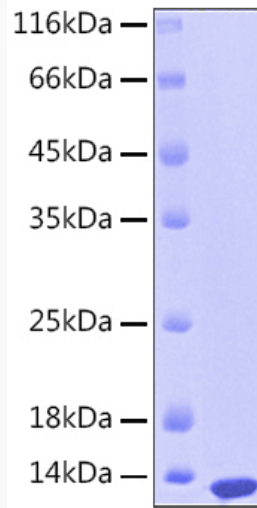
UniProt ID P80511

 Tel: 1-631-559-9269 1-516-512-3133

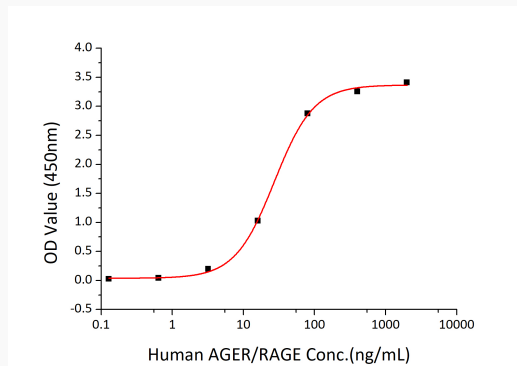
 Email: info@creative-biomart.com  Fax: 1-631-938-8127

 45-1 Ramsey Road, Shirley, NY 11967, USA

SDS-PAGE



Bio-activity



 Tel: 1-631-559-9269 1-516-512-3133

 Email: info@creative-biomart.com  Fax: 1-631-938-8127

 45-1 Ramsey Road, Shirley, NY 11967, USA