

## Active Recombinant Human S100A12 protein

Cat. No. S100A12-3096H Lot. No. (See product label)

### SPECIFICATION

<b>Product Overview</b>	Active Recombinant Human S100A12 protein(NP_005612.1) (Met 1-Glu 92) was expressed in E. coli.
<b>Species</b>	Human
<b>Source</b>	E. coli
<b>ProteinLength</b>	1-92 aa
<b>Form</b>	Lyophilized from sterile PBS, pH 7.4.
<b>Bio-activity</b>	Measured by its binding ability in a functional ELISA. Immobilized recombinant human S100A12 at 2 µg/ml (100 µl/well) can bind human AGER with a linear range of 0.032-20 µg/ml.
<b>Molecular Mass</b>	The recombinant human S100A12 consisting of 92 amino acids and has a calculated molecular mass of 10.6 kDa. It migrates as an 10 kDa band in SDS-PAGE under reducing conditions as predicted.
<b>Purity</b>	> 98 % as determined by SDS-PAGE
<b>Storage</b>	Store it under sterile conditions at -20°C to -80°C upon receiving. Recommend to aliquot the protein into smaller quantities for optimal storage. Avoid repeated freeze-thaw cycles.

 Tel: 1-631-559-9269 1-516-512-3133

 Email: [info@creative-biomart.com](mailto:info@creative-biomart.com)  Fax: 1-631-938-8127

 45-1 Ramsey Road, Shirley, NY 11967, USA

<b>Reconstitution</b>	It is recommended that sterile water be added to the vial to prepare a stock solution of 0.2 ug/ul. Centrifuge the vial at 4°C before opening to recover the entire contents.
<b>protein Refseq-Weblink</b>	<a href="http://www.ncbi.nlm.nih.gov/protein/NP_005612.1">http://www.ncbi.nlm.nih.gov/protein/NP_005612.1</a>
<b>Unit ID</b>	P80511
<b>Unit ID-Weblink</b>	<a href="https://www.uniprot.org/uniprotkb/P80511">https://www.uniprot.org/uniprotkb/P80511</a>

## GENE INFORMATION

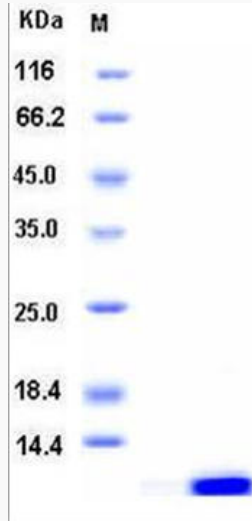
<b>Gene Name</b>	<a href="#">S100A12</a> <a href="#">S100 calcium binding protein A12</a> [ <a href="#">Homo sapiens</a> ]
<b>Official Symbol</b>	<a href="#">S100A12</a>
<b>Synonyms</b>	S100A12; S100 calcium binding protein A12; S100 calcium binding protein A12 (calgranulin C), S100 calcium binding protein A12 (calgranulin C); protein S100-A12; CAAF1; CAGC; CGRP; ENRAGE; MRP6; p6; EN-RAGE; calgranulin C; calgranulin-C; neutrophil S100 protein; calcium-binding protein in amniotic fluid 1; S100 calcium-binding protein A12 (calgranulin C); extracellular newly identified RAGE-binding protein;
<b>Gene ID</b>	<a href="#">6283</a>
<b>mRNA Refseq</b>	<a href="#">NM_005621</a>
<b>protein Refseq</b>	NP_005612
<b>MIM</b>	<a href="#">603112</a>

 Tel: 1-631-559-9269 1-516-512-3133

 Email: [info@creative-biomart.com](mailto:info@creative-biomart.com)  Fax: 1-631-938-8127

 45-1 Ramsey Road, Shirley, NY 11967, USA

**SDS-PAGE**



 Tel: 1-631-559-9269 1-516-512-3133

 Email: [info@creative-biomart.com](mailto:info@creative-biomart.com)  Fax: 1-631-938-8127

 45-1 Ramsey Road, Shirley, NY 11967, USA