

Recombinant Human S100A12 Protein (Met1-Glu92), N-His tagged

Cat. No. S100A12-6225H Lot. No. (See product label)

SPECIFICATION

Product Overview	Recombinant human S100A12 (Met1-Glu92) fused with the N-His tag was expressed in E. coli.
Species	Human
Source	E.coli
ProteinLength	Met1-Glu92
Form	Lyophilized powder/frozen liquid
Molecular Mass	12.88 kDa
Purity	> 90 % as determined by SDS-PAGE
Notes	For research use only.
Storage	Use a manual defrost freezer and avoid repeated freeze thaw cycles. Store at 2 to 8 centigrade for one week. Store at -20 to -80 centigrade for twelve months from the date of receipt.
Storage Buffer	0.01M PBS, pH 7.4, 0.02 % NLS
Reconstitution	Reconstitute in sterile water for a stock solution.

 Tel: 1-631-559-9269 1-516-512-3133

 Email: info@creative-biomart.com  Fax: 1-631-938-8127

 45-1 Ramsey Road, Shirley, NY 11967, USA

Shipping They are shipped out with dry ice/blue ice unless customers require otherwise.

GENE INFORMATION

Gene Name [S100A12 S100 calcium binding protein A12 \[Homo sapiens \(human\) \]](#)

Official Symbol [S100A12](#)

Synonyms S100A12; S100 calcium binding protein A12; S100 calcium binding protein A12 (calgranulin C), S100 calcium binding protein A12 (calgranulin C); protein S100-A12; CAAF1; CAGC; CGRP; ENRAGE; MRP6; p6; EN-RAGE; calgranulin C; calgranulin-C; neutrophil S100 protein; calcium-binding protein in amniotic fluid 1; S100 calcium-binding protein A12 (calgranulin C); extracellular newly identified RAGE-binding protein;

Gene ID [6283](#)

mRNA Refseq [NM_005621](#)

Protein Refseq [NP_005612](#)

MIM [603112](#)

UniProt ID [P80511](#)

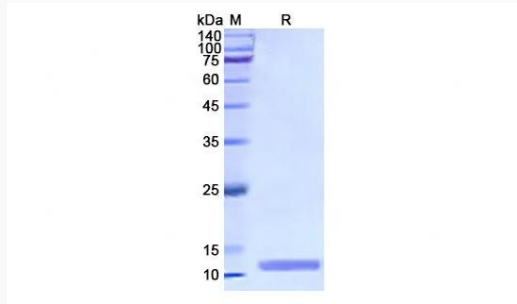
 Tel: 1-631-559-9269 1-516-512-3133

 Email: info@creative-biomart.com  Fax: 1-631-938-8127

 45-1 Ramsey Road, Shirley, NY 11967, USA



SDS-PAGE



Tel: 1-631-559-9269 1-516-512-3133

Email: info@creative-biomart.com Fax: 1-631-938-8127

45-1 Ramsey Road, Shirley, NY 11967, USA