

# Recombinant Human S100A13 Protein, Myc/DDK-tagged, C13 and N15-labeled

**Cat. No.** S100A13-2951H    **Lot. No.** (See product label)

## SPECIFICATION

### Product Overview

S100A13 MS Standard C13 and N15-labeled recombinant protein (NP\_001019383) with a C-terminal MYC/DDK tag, was expressed in HEK293 cells.

### Species

Human

### Source

HEK293

### Description

The protein encoded by this gene is a member of the S100 family of proteins containing 2 EF-hand calcium-binding motifs. S100 proteins are localized in the cytoplasm and/or nucleus of a wide range of cells, and involved in the regulation of a number of cellular processes such as cell cycle progression and differentiation. S100 genes include at least 13 members which are located as a cluster on chromosome 1q21. This protein is widely expressed in various types of tissues with a high expression level in thyroid gland. In smooth muscle cells, this protein co-expresses with other family members in the nucleus and in stress fibers, suggesting diverse functions in signal transduction. Multiple alternatively spliced transcript variants encoding the same protein have been found for this gene.

### Molecular Mass

11.5 kDa

### AA Sequence

MAAEPLTELESJETVVTFFTFARQEGRKDSLVSNEFKELVTQQLPHLLKDVGSLDE  
KMKSLDVNQDSELKFNEYWRLIGELAKEIRKKKDLKIRKKTRTRPLEQKLISEEDLAA  
NDILDYKDDDDKV

 Tel: 1-631-559-9269    1-516-512-3133

 Email: [info@creative-biomart.com](mailto:info@creative-biomart.com)     Fax: 1-631-938-8127

 45-1 Ramsey Road, Shirley, NY 11967, USA

<b>Purity</b>	> 80% as determined by SDS-PAGE and Coomassie blue staining
<b>Stability</b>	Stable for 3 months from receipt of products under proper storage and handling conditions.
<b>Storage</b>	Store at -80 centigrade. Avoid repeated freeze-thaw cycles.
<b>Concentration</b>	50 µg/mL as determined by BCA
<b>Storage Buffer</b>	100 mM glycine, 25 mM Tris-HCl, pH 7.3.

## GENE INFORMATION

<b>Gene Name</b>	S100A13 S100 calcium binding protein A13 [ Homo sapiens (human) ]
<b>Official Symbol</b>	S100A13
<b>Synonyms</b>	S100A13; S100 calcium binding protein A13; protein S100-A13; S100 calcium-binding protein A13;
<b>Gene ID</b>	6284
<b>mRNA Refseq</b>	NM_001024212
<b>Protein Refseq</b>	NP_001019383
<b>MIM</b>	601989
<b>UniProt ID</b>	Q99584

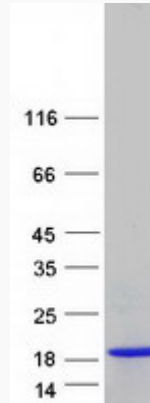
 Tel: 1-631-559-9269 1-516-512-3133

 Email: [info@creative-biomart.com](mailto:info@creative-biomart.com)  Fax: 1-631-938-8127

 45-1 Ramsey Road, Shirley, NY 11967, USA



SDS-PAGE



Tel: 1-631-559-9269 1-516-512-3133

Email: [info@creative-biomart.com](mailto:info@creative-biomart.com) Fax: 1-631-938-8127

45-1 Ramsey Road, Shirley, NY 11967, USA